



**CONEXPO**

April 2009

# Usina de Noticias

Number 19

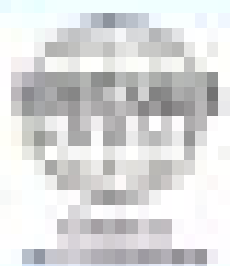
- **M&T 2009** Ciber prepares new products
- **Africa** Plants operating on Argelian soil



SPECIAL

## Launch of new Kompakt series

# SAFETY, HEALTH — AND ENVIRONMENTAL RESPONSIBILITY



SAFETY, HEALTH — AND ENVIRONMENTAL RESPONSIBILITY

# TABLE OF CONTENTS

## Editorial staff



THE "USINA DE NOTÍCIAS" MAGAZINE IS A QUARTERLY PUBLICATION OF CIBER EQUIPAMENTOS RODOVIÁRIOS LTDA. - A WIRTGEN GROUP COMPANY.

Rua Senhor do Bom Fim, 177  
CEP (Zip Code) 91140-380  
Porto Alegre - RS - Brazil  
Phone: (55-51) 3364-9200  
Fax: (55-51) 3364-9222  
ciber@ciber.com.br  
www.ciber.com.br

**Responsible party:**  
Stella Richetti  
(Media and Advertising)

**Production and execution:**



Phone: (55-51) 3346-1194  
redacao@tematica-rs.com.br

**Edition:**  
Fernanda Reche (MTb 9474) and  
Svendia Chaves (MTb 9698)

**Reports:**  
Patrícia Campello

**Revision:**  
www.pos-texto.com.br

**Translated by:**  
www.traduzca.com.br

**Artwork:**  
Eduardo Mello

**Printing run:**  
4,000 copies (Portuguese)  
1,800 copies (Spanish)  
1,000 copies (English)

**Free distribution.**

The reproduction of this material  
is allowed if the source is cited.

## Ciber launches Kompakt plant



The new counter-flow asphalt plant is characterized by its ease of use in inhospitable regions

Page 8

## Rental wins space in Brazil

Machine rental companies are counting on Ciber technology to serve contractors that do not have their own fleets



Page 12

What's Happening.....	4
Infrastructure.....	7
Latin America.....	11
Brazil.....	14
Technology.....	15
Building Projects.....	16
Africa.....	17
Word from the Specialist.....	18

## Quality that doesn't stop

Walter Rauen de Souza  
Director-President of Ciber



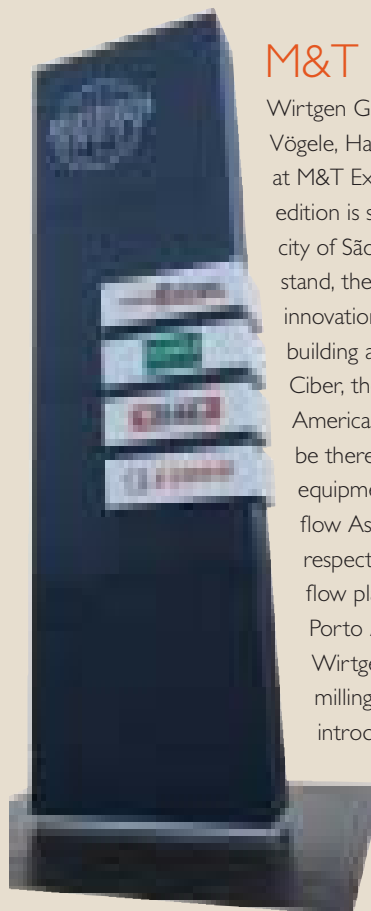
Ciber's competence, achieved through experience, is now one of our greatest assets. With its leadership position in Latin America, our brand's equipment is already at work in many different countries in the region, facing the adversity of mountain ranges and deserts with high rates of productivity. More than just state-of-the-art technology, we guarantee the greatest possible use of our equipment.

An idle machine is synonymous with waste. Cost reduction with equipment should not only be calculated at the time of acquisition; a plant's lack of capacity and poor functioning can, for example, quickly consume the small amount saved at the time of purchase. Not only that, but counting on guidance from the manufacturer and agility in support and technical assistance gives the contractors confidence that the work will be carried out in the most economical and effective manner possible.

We are certain that our success in African countries is greatly due to our more than 50 years of experience in the road paving market. On this long road, we have learned to meet the needs of our clients through investments in products and services. It is this success story, together with our commitment to continuous improvement, which is allowing us to celebrate the further broadening of our horizons, presenting the results of our investments in research and development at M&T Expo, in June. The event, which becomes stronger at each edition, is the stage to promote our brand's consolidation.

## M&T Expo 2009

Wirtgen Group, made up of Wirtgen, Vögele, Hamm and Ciber, will be present at M&T Expo 2009. The event's next edition is set to take place June 2-6 in the city of São Paulo, Brazil. With its 850 m<sup>2</sup> stand, the group will be exhibiting the innovations of its line of highway paving, building and recuperation equipment. Ciber, the group's only subsidiary in Latin America, is organizing the event and will be there with its newest piece of equipment, the Kompakt 500 Counter-flow Asphalt Plant and its well-respected "Advanced" line of counter-flow plants, all produced in the city of Porto Alegre, Rio Grande do Sul. Wirtgen is preparing to exhibit its milling machines and its recently introduced WR 2000 XL stabilizer, as



well as its SP 150 slip form concrete paver. The group will also be displaying its multi-purpose Hamm compactors, such as the

model 34II for earth compaction (made in Brazil) and its new equipment for asphalt compaction like the HD14VT articulated tandem compactor, ideal for night work. Visitors will also be able to see Ciber's "plus" line of Pavers and the second generation of the Vögele.

In 2006, Ciber's stand received approximately 1,200 visits. The trade fair had nearly 300 exhibitors and 457 brands from 23 countries, and brought in 34,213 visitors.

This year the M&T Expo expects to attract more than 42,000 visitors from Brazil and abroad.

## Ciber is Rio Grande do Sul standout

On December 8, Walter Rauen, Ciber's managing director received the Destaque Gaúcho Empresarial trophy (given to Rio Grande do Sul's most outstanding business). The awards ceremony took place in the Brazilian city of Novo Hamburgo, in the state of Rio Grande do Sul. The award is promoted by Destaque Gaúcho magazine (Outstanding in Rio Grande do Sul) and the ceremony brought together representatives from a wide variety of economic segments, government authorities and special guests. Ciber's technological innovation and its position of relevance were the definitive factors in its being chosen as the winner.

## Training center promotes professional development

In May of 2008, Ciber inaugurated a Training Center in its factory in Porto Alegre, Brazil. During the first year, 37 gatherings were organized to train clients and representatives, bringing in 350 people from Africa and Latin America. The center has two air-conditioned,

soundproofed classrooms. It also has equipment, such as multi-media devices, teaching aids, simulators that teach operation and maintenance of asphalt plants, pavers, milling machines and compaction rollers. The center is designed for trainings for all of

the Wirtgen Group's equipment. Special editions are also organized, with courses aimed at specific markets, as well as activities carried out on-site, dealing with practical matters. "Advanced trainings are held, specifically dealing with a piece of equipment's application, maintenance and operation," stated Ciber's Service Coordinator Lídio Coutinho.

In 2009, Ciber is anticipating a busy schedule, with 62 professional development and refresher courses, providing access to the most advanced pavement construction techniques. The center's structure will also be changed, increasing the number of trainers.



April		
Date	Topic	Class Hours
1-3	Counter-flow asphalt plant	24h
6-7	AF Series Pavers	16h
8 and 9	Compaction Rollers	16h
13-17	Counter-flow asphalt plant	40h
27-30	Recycler WR2000 Milling Machine 1900	32h

## Ciber invests in employee quality of life

Employee well-being is the reason-for-being behind the Quality of Life Program designed by Ciber Equipamentos Rodoviários. Several actions are being put into practice so the company's personnel can have a healthy and motivating working environment. One of the initiatives involves surveying and conducting a diagnostic of employees' current working conditions, in order to put ergonomically related improvement actions into practice. Towards physical and mental wholeness and development, the company encourages its employees to include sports activities in their daily lives, paying registration fees for annual games organized by the Social Service for Industry organization (Sesi). It will also make a space available for workers to rest. The idea is to build a leisure area for break times, with comfortable furniture and games.

November 17-21, 2008, the In-Company Week of On-the-Job Accident Prevention (Sipat) was held. In addition to demonstrations of on-the-job exercises and

guidance on dental care, those attending were able to listen to psychologist Olga Schaffer's lecture, "The Influence of Moods in Preventing Workplace Accidents."



On-the-job exercise guidance

## High productivity on remote Peruvian sites



CASA - Construcción y Administración S.A., a company founded in 1975 that is well-established on the Peruvian market, is using three Ciber UACF I9P-2 plants on sites that connect the country to Ecuador and Brazil. Two of them are operating on Stretch 5 of the Southern Peru-Brazil Transoceanic Highway, and are performing splendidly even at such high altitudes (4,300m) and low

temperatures, which at time can be as low as 5°C. In addition to benefiting 2.5 million inhabitants, Stretch 5 will invigorate southern Peru's economy, connecting ports on the Pacific coast to the Andean region. Its 827 km of completely paved highway, which will be continuously maintained, should reduce the trip between Puno and Ilo by at least two hours. 64 kilometers of new highway will be

built on this stretch. Periodic maintenance will be done on the 763 kilometers of already existing highway.

The third UACF I9P-2 is building Main Link Road no. 1, a project which is part of the Binational Peru-Ecuador Program, in a region that is quite hot and humid, with temperatures as high as 35°C. Rough weather caused by El Niño in 1998 caused serious damage to roads and bridges in both countries and the outdated customs infrastructure has hindered international transports. A new system began to be built in 2006, and by December of 2008, 64% of the work was already finished. The work includes the construction of a new international bridge, its access points, an expressway and a Binational Border Attention Center. The international expressway will be built on a covered base of varying height - of up to seven meters - and a drainage system to prevent the highway infrastructure from being affected during the rainy season, especially with the El Niño phenomenon.

## Ciber participates in lectures and conferences

Continuing the company's busy schedule, Ciber has been very present at events in Brazil and Latin America in 2008 and the beginning of 2009. On February 16, the company organized a meeting with its clients from São Paulo to share experiences, providing information on its products and on the Wirtgen Group's activities in the world as well.

In order to approach the Colombian market even more, the company was at the 5th

Congreso Nacional de La Infraestructura, in Cartagena, Colombia, november 19-21, 2008, approximately 1,200 leaders and entrepreneurs from the construction related industries came together to discuss the country's infrastructure scenario for the coming years. Ciber, in cooperation with Fiza, its representative in the country, had its own stand and held a luncheon for 1,000 that was attended by the president of Colombia, Álvaro Uribe.

In Brazil, another event was part of the company's schedule: The 5th National Seminar on Modern Road Construction Techniques. The event, which took place in November, was organized by the Santa Catarina State Association of Engineers (ACE). In addition to having its own stand, Ciber organized the lecture "Recycling and Compaction Technology for Pavement Recuperation," given by Rodrigo Pereira, of the company's Application Engineering department.



Conversation with clients in São Paulo

In September, Ciber was at the 39th Annual Pavement Meeting (RAPv) in Recife, Brazil. This activity is considered one of the most important meetings in Brazil and deals with matters concerning the maintenance and restoration of the nation's high and low traffic roadways.

And there is even more news for the Brazilian market: during the months to come, the company will be participating in RPU 2009 in Belo Horizonte, in the state of Minas Gerais, and the M&T, in the city of São Paulo.



The president of Colombia, Álvaro Uribe, gives speech at Cartagena conference

Ciber equipment  
is being used to  
build testing  
grounds for the  
nine companies  
of Brazilian  
group Randon

## Quality on testing grounds

**D**alfovo Construtora – a business located in the Brazilian city of Caxias do Sul and specialist in site leveling, civil construction and paving services, active in the states of Rio Grande do Sul and Santa Catarina, led by Juarez Alex Dalfovo, executive production manager and Elineu Dalfovo, general director, and by Jairo Miguel Dalfovo, financial manager – is charged with the important mission of delivering a daring undertaking to Randon, the testing grounds for the Caxias group's nine companies. An area of 87 hectares will be transformed into an advanced technological center for tests, in strict compliance with environmental protection legislation. Still in progress, the site has yet to undergo the stages of asphalt paving, installation of the lanes (concrete and off-road), and construction of the testing and simulation laboratory, along with the garage for preparation of vehicles for tests. The plan includes a series of lanes, such as those for high and

low velocity, off-road, and others for measurement of travel noise measurement and friction, among others. In order to carry out this work, Dalfovo is using two AF5000 PLUS pavers for application of the base and sub-base layers, formed respectively by simple graduated gravel (SGG) and cement treated graduated gravel (CTGG). The Kompakt 500 counter-flow asphalt plant will be responsible for producing the asphalt mixture for the binder and roller layer (*more information on page 8*).

### Precision and quality

The choice of Ciber equipment is justified for its improved performance. The PLUS series pavers, for example, rely on an intelligent automation system with three microchip controllers specifically designed for operation in "Off Road" type machines. These monitor and control all functions by way of a screen that displays information for the operator in real time, so that they can act quickly on any eventual errors and in emergency situations. The components for automation are interconnected by way of a high speed network, which turns its operation more precise and reliable.

For its part, the material conveyance system (augers and conveyors) offers advantages such as excellent mix flow control, greater technology and efficiency, and the ability to be used in a greater variety of pavement applications. Another important resource is the automatic grading system, which ensures precision in the paving process by way of constant monitoring of the screed's position in relation to the reference surface.



## ASPHALT PLANT



Ciber launches  
Kompakt counterflow  
asphalt plant






---

The first of its kind on the market, the new Kompakt counter-flow asphalt plant is characterized by its ease-of-use on sites located in inhospitable regions and where fast execution is a necessity

---

A new product has arrived on the market of equipment for highway paving, construction and maintenance: the Kompakt counter-flow asphalt plant. Introduced by Ciber in October of 2008, the machine combines advantages like reduced installation cost and construction time, which are the result of a design that facilitates assembly and logistics. Its characteristics make it ideal for work located at medium-high altitudes, and can adapt itself to the extreme curves of mountainous areas, specifically in Andean regions and for narrower highways.

Manufactured at Ciber's factory in Porto Alegre, RS, the Kompakt was custom designed by its own Research & Development and Engineering department, which worked on the project for 15 months, using its simulation and modeling software to ensure the equipment's solid performance. The new plant will be able to reach markets such as countries in South America, as well as the Caribbean and southeastern Africa, places with unique geographical features and urbanization and infrastructure policies.

### Mobility made easier

Ease of movement is an important feature for those who use the plant. Its 2.6 meter width gives it great mobility and also removes the necessity for a transport license. Mineral aggregates can be loaded from both ends, which makes the equipment extremely versatile. Flexibility in tank positioning allows it to be placed in both a parallel position as well as perpendicularly, without the need for pre-built concrete support.

The advantage of the Kompakt series is that it adapts itself better to local working conditions, without the need for specific civil bases, a necessary characteristic for work that needs to be done quickly. “Clients don’t need to worry about details when they position the plant,” explained managing director Walter Rauhen.

With the Kompakt, the entire conveyor structure is connected to the equipment’s chassis, which facilitates its grading. A better view of the load in the truck’s dump box improves adjustments made during the asphalt mix production cycle, observation of consumption and the loading of material into the cold feed bins.

High technology

The bins can be operated by volumetric or dynamic dosing, being, as well, in two parts for the use of four materials. The elongated filter allows for slower passage of gases into the filter’s entrance, also

Kompakt’s innovative features

Here are some of the innovative features that set the Kompakt apart from other plants:

- Bins** – Two part bins for four materials, with choice of volumetric and dynamic dosing.
- Filter** - The filters are different in that they use pleated bags, well-proven technology from the Advanced line. Also, due to their elongated shape, they allow greater “settling” of the gases at the filter’s entrance, reducing the need for spirals and system maintenance.
- Mixer** – The Kompakt line’s mixer is at an angle, it increases the mixing time for the aggregates and bituminous binding agent. The mixing system is also innovative in that it implements in its output mechanism transmission by pulleys and belts, with timing by gear boxes.
- Dryer** – The dryer has a larger combustion and dry mix zone, with the possibility of injection of fine reincorporated aggregates or fibers after the combustion zone.
- Cabin** – The cabin makes it possible to view the loading of cold aggregates as well as of the truck. It is mobile and situated away from the machine’s structure. The cabin’s base makes the outside working zone accessible to the operator, as well as access to the mixing system, truck load and burner.
- Unloading system** – The drag conveyor is quite compact and can be placed in transport position with three simple assembly operations. It has easy access points for cleaning and maintenance.

diminishing the number of spirals in the fine aggregate system and reducing maintenance costs.

The new mixer’s angular position makes it possible to vary the mixing time, ensuring high quality mixing of the aggregates with the bituminous binding agents, regardless of the situation. The mixing system is innovative in that

its output system introduces transmission by pulleys and belts with timing by gear boxes. The dryer is longer in its combustion zone and has fins for dry mixing, which makes it possible to inject reincorporated fine aggregates or fibers after the combustion zone.

The cabin, in addition to being mobile and situated away from the plant’s structure, is air-conditioned and all commands are within reach of the operator. It is also possible to see the loading of the cold

Technical features of the Kompakt 500

- Production capacity: 50t/h
- Bins: 4 divided with individual weighing
- Dryer: Counter-flow
- Burner: 7MW
- Filtering System: Pleated Bags
- Mixer: Twin-Shaft Pug mill type Mixer
- Conveyor: Redler-type drag conveyor

Size of the new plant

- 2.6 m wide
- 4 m high
- 14 m long (without truck)



aggregates and of the mixture in the truck. The cabin’s base makes the outside working zone accessible to the operator, as well as access to the mixing system, truck load and burner.

“Placing the drag conveyor into working position, after transportation, requires only three assembly operations. Maintenance can be carried out via easy access points, as can cleaning,” explains Bernardo Ronchetti, Ciber’s engineering manager.

# Batch plant arrives in Colombian territory

**Ciber** sold an **UAB 18** to an important consortium in **Colombia**, which will be used on sites in the country's northern region

**C**olombian Consortium Grupo Constructor Ruta Caribe acquired an UAB 18 batch plant, which arrived at the port of Cartagena in December of 2008. The company will be operating, more specifically, on the Colombian Atlantic coast and the equipment will be used to execute asphaltic paving work.

The equipment is being assembled and will be used in work that involves the application of asphalt on the route between the departments of Atlántico and Bolívar. Secondary highways will be built between the cities of Cartagena, Arjona, and Bayunca and in the area which passes through Sabanagrande, Palmar de Varela and Malambo. Additionally, 140 kilometers of the existing roadways will be recuperated.

This undertaking is of great economic importance to the region. Recovery and construction of new roadways for the integration of two of Colombia's main Caribbean ports: Barranquilla and Cartagena.

## State-of-the-art technology

The choice of the equipment was made due to its technological contribution. According to Álvaro Movilla, from Ruta Caribe Consortium, the UAB 18 makes it possible to strictly control the production of the bituminous mixtures, an important characteristic for the



Francisco Isaza (Fiza), Rafael Zuchetto (Ciber), Luiz Zoch (Ciber), Gustavo Adolfo Rodríguez (Grodco), Francisco Isaza Diaz (Fiza), Camilo Isaza Diaz (Fiza)

project under the contractor's responsibility. Another aspect he pointed out is the fact that the plant has a system that is capable of controlling gas emissions, thereby complying with the requirements of Colombia's environmental agencies. "The strict mixture dosing control is also worthy of mention," he stated.

## Promising market

Colombia has been investing heavily into the development of their highway infrastructure. "You might say that 89% of the plants in operation on large Colombian sites are Ciber plants," said Francisco Isaza, of Fiza, Ciber's representative in the country. In his opinion, the plants' high level of acceptance by clients can be explained by contractors' concerns with following the environmental protection rules determined by the Colombian government. "In Colombia, rules regarding machines are increasingly stringent, in order to reach life expectancy and work quality objectives. Wirtgen Group's plants fulfill all of these needs," he concluded.



Manuel Ortiz and Olga Rodríguez, of Grodco



UAB 18 Advanced discontinuous asphalt plant

# Equipment rental gaining ground in Brazil

---

Renting machines is the **best choice** for **contractors** that don't have their **own fleet**. **Ciber** equipment is **helping** the **market** to grow

---

**C**iber's quality has already won the confidence of paving equipment rental companies in Brazil. With their excellent cost-benefit ratio, Ciber's machines can be used without worrying about maintenance shutdown intervals, and their performance is greater than market expectations. Another point in favor of

Ciber equipment for the rental market is their durability: for example, the first counterflow asphalt plants that were sold in Brazil have now been in full use for more than ten years.

Lack of building project predictability, and confidence in service providers who take care of all the details regarding machine



Hamilton Reis, engineer at Installe Engenharia Civil



Eurimilson João Daniel, director of Escad Rental

maintenance are what have led some contractors to begin renting equipment. "Renting lends more agility to those contractors who don't know when the deal is going to be closed or when a project is going to begin," explains Claudi Mortari, Ciber's commercial director.

The benefits of equipment outsourcing haven't been the only factors responsible for the recent increase in demand for rentals. In recent years, the federal government has increased investments in infrastructure across the entire national territory, beginning a variety of emerging building projects. The increase in the number of building projects is directly expressed in the revenue of entrepreneurs in the field. According to Eurimilson João Daniel, director of Escad Rental, a company with branches in the states of São Paulo, Minas Gerais and Pará, the Brazilian rental market has put on muscle in all sectors, including mining, construction and road construction: "Work on roadways weighs significantly due to Brazil's size and the never-ending

need to improve and build new highways." Currently, Escad owns more than ten Hamm compaction rollers.

### Technology and competitiveness

Initiatives like the Brazilian government's Growth Acceleration Program (PAC), for example, have given the sector momentum and required renovation of fleets. "The country's machines were very old. In recent years, there has been new energy in the sector and equipment sales

have been on the rise." Recycling the rental companies' fleets meets the demands of extremely demanding consumers. Keeping up with the trends and betting on new technology are predetermining factors for companies that would like to be competitive. Renters always want the best equipment and cannot run the risk of equipment breakdowns. For that reason, Ciber has been favored by rental companies.

Clients want equipment of proven quality on their construction sites. "When the time comes to rent, contractors value machines that use less fuel, make less noise, and which offer more comfort to their operators. Operating equipment used to be more complicated. Nowadays, simple processes are more important. And the industry has adapted to these changes," Daniel emphasized.

### Rental Service

According to Hamilton Reis, engineer at Installe Engenharia Civil, a company located in the northeastern Brazilian city of Fortaleza, international banks and

the federal government are both investing in undertakings that use machines to restore and duplicate highways. "There are many projects, like the project for the channel to convey the waters of the São Francisco River, among others."

Reis pointed out that the sector is maturing due to the contractors increasing their use of rental machines. "With this, the rental companies are investing in modern machines and in operator training," he added. In order to earn client loyalty, the strategy is to offer high productivity equipment at low operating costs and with high mechanical availability rates. "Two other crucial points are the age of the product and its state of conservation and appearance." Installe, a Ciber client active in the rental segment since 1997, will not give up quality technical service. "It's no use buying excellent equipment if the assistance doesn't work fast and at a fair price. Wirtgen Group meets our clientele's expectations."

### At the other end

Certain of the rental segment's importance, Ciber has established a solid relationship with important companies in the sector. The company always works hard to serve clients quickly, with local representatives and post-sales service that ensures their satisfaction. "The rental companies are a kind of shop window for us, because they circulate in different markets with our products. It's a niche that, as time goes by, is becoming more and more professional. The rental companies are requesting new technology from manufacturers," stressed Claudi Mortari, Ciber's commercial director.

# Brazilian contractor bets on high technology fleet

Ciber's partner for the past two years,

Brazilian contractor

Paviservice wants automated equipment with productivity that beats expectations

Ciber's experience in the roadbuilding equipment market is what motivated Paviservice Serviços de Pavimentação, headquartered in Salvador, Brazil, to acquire eight more machines from the Wirtgen Group. The contractor has used the equipment on important construction projects.

In the state of Sergipe, the contractor is restoring 120 kilometers of highway SE-230, on stretches that go through the cities of Nossa Senhora das Dores, Nossa Senhora da Glória, Monte Alegre and Canindé de São Francisco. The work is leading to improvements in the region, on highways that are vital to the economy. SE-230 is responsible for the production flow and is an attractive route for tourism. "The idea is to improve the traffic conditions," emphasized Ronald Velame, director of Paviservice.

Ciber equipment is also operating on BR-020, a federal highway beginning in the city of Brasília, Distrito Federal, and ending in Fortaleza, Ceará. The service includes the restoration and maintenance of several road segments connecting the city of Caruaru, Pernambuco, to the border

of the state of Goiás. The undertaking began in the second half of February, 2009 and includes 300 kilometers of construction work.

Paviservice is active in the states of Bahia, Sergipe, Mato Grosso, Mato Grosso do Sul, Tocantins and Paraíba. "Our policy has always been to innovate, searching for the most modern, high productivity equipment on the market. A necessity in these times of tight budgets," explained Velame.

## Guaranteed loyalty

As Velame sees it, the equipment achieves such high rates of satisfaction because of its productivity. In addition to the product's high productivity and cost savings, the assistance provided by Ciber's representatives (in different parts of Brazil) gives essential support so that the projects can be carried out with agility. In the opinion of Raimundo Machado, Ciber's representative in northeastern Brazil, monitoring the equipment as it functions is preventive work. "We try to have the same close relationship we have with Paviservice with all of our clients."



Ronald Velame at Wirtgen's facilities in Germany



AF 5500, part of contractor's machine park



Hamm roller on Paviservice sites across the country



Base recycling on SE-204, on the Tatú stretch in Pacatuba



Paver units have been acquired by Brazilian contractors, such as Vale do Rio Novo, Compec Galasso Engenharia e Construções, Mark Construtora de Obras and Conterra Construções e Terraplanagem

## Vögele Super 1300: productivity and savings

The Vögele Super 1300 paver has been gaining ground on the Brazilian market. That it has been well-accepted by many contractors is based on the results it provides, like final pavement quality and the usage practicality and versatility the paver's compact size affords. Benefits, such as cost-reduction in combination with greater productivity, are decisive factors for companies active in the sector. Wirtgen Group, for its part, seeks to offer products with technology that is able to fulfill this necessity and meet clients' expectations in terms of productivity.

The new Vögele paver can be used on a wide variety of jobs. "It has the potential



to work in any region of Brazil," stated Rodrigo Pereira, of Ciber's Marketing Engineering department. Among the many jobs it can be used on, several stand out, such as the building of roads and squares of small sizes, as well as industrial roads, and bike and walking paths. The 1300-2 paver adapts itself especially well to work in small areas because of its versatility, such as in the case of urban downtown areas. In addition to its quiet operation, it offers advantages such as low gas emissions, which reduces the risk of damage to the environment.

Conterra Construções e Terraplanagem, from the Brazilian city of Cachoeirinha, Rio Grande do Sul, bet on the model, acquiring a Vögele Super 1300 paver, sold by Ciber. The equipment's automation was what attracted the company's attention, which has been active in southern Brazil for 30 years. "Its technology lends precision to a job's execution. The machine's operation is more linear, with less variation, because the machine is always monitoring," explained Ricardo Leivas Basser, the company's industrial manager. The paver will be used on urban sites and on highways. The machine has already recapped roads in the city of Alvorada, Rio Grande do Sul, and is currently being used on a project to improve highway BR-471 on the stretch near the city of Vera Cruz.



Characteristics of the Vögele Super 1300

Paving width of up to 5 meters

Production capacity of up to 350 tons/hour

Transport width of just 1.85 m

100 Hp Deutz engine

Equipped with an AB 340 extending compaction screed with tamper and vibrator

Electric heating

Designed with the ErgoPlus system, featured in all Vögele second generation pavers

A wide fiberglass type protective awning over the entire operating region

# Quality extends throughout the country



Brazilian contractor has acquired several units to employ in building projects, like those being carried out in the states of Paraná and São Paulo

With 30 years experience in the construction and paving market, the company Vale do Rio Novo, headquartered in the city of São Paulo, Brazil, excels in the quality of the services it provides to its clients. In order to achieve this level of excellence, the company, managed by its members Ademir and Ademar Belinatto, is always in touch with trends and uses high performance machines with cutting-edge technology in all their work. The care they take in choosing their machinery has led the contractor to maintain a solid partnership with Ciber.

During the past two years, Vale do Rio Novo has acquired five pavers, four Hamm compaction rollers, three milling machines and two UACF 17 Advanced asphalt plants from Ciber. "For example, our choice of the UACF 17 P was due to its being a state-of-the-art, high productivity plant.

Our most recent acquisition was a W 1900 milling machine, with optional LA8 fine milling," stated Ademir Belinatto.

The qualified service provided by Ciber has also contributed to consolidate our relationship. According to Antônio Monfrinatti, Ciber's representative in the region, the objective is always to identify a client's needs and provide quick returns both commercially and technically. "Vale do Rio Novo works with a spirit of cooperation, interacting with us and providing us

with the information we need to constantly improve," emphasized Monfrinatti.

## Producing asphalt

One of the company's important undertakings is with Rodonorte, located in the state of Paraná, Brazil, where work is being done on highways BR-376, BR-277, PR-151 and PR-96. This work includes recovery of the lanes using rollers, milling machines, recapping, shoulder paving and lane drainage. The job covers approximately 400 kilometers and employs 250 workers. Work began in September of 2007, and involved approximately R\$ 80 million in investments during the first stage. Approximately 25,000 tons of rubber asphalt and 15,000 tons of binder milled by the UACF 17 P Advanced have already been used.

In São Paulo, Vale do Rio Novo has another UACF Advanced plant installed in the city of Santa Cruz do Rio Pardo, working on restoration of the Raposo Tavares Highway on the SP-270, SP-255 and SP-278 stretches, for a total of 42 kilometers. The equipment will also be recapping 92 kilometers of nearby highways. The work is being done by a team of 300 and involves capital investments to the order of R\$ 60 million. "The plant is producing an average of 800-1000 tons of rubber, conventional and binder asphalt every day," said Ademar Belinatto.



# Satisfaction on Argelian soil

**Ciber equipment**  
has crossed the  
ocean **to be part of**  
important  
**companies' machine**  
parks, for building  
projects in **Argelia**

**C**iber product credibility has earned the confidence of Argelian contractors. The equipment has become a reference standard in the region and is the first-choice for well-respected companies in the highway construction sector, such as ETPH Mouilah, ETP Benatia and STPR Bicha, among others. In two years, 21 UACF 17P-2 Advanced plants have been exported and in 2009 at least 10 more units are expected to be sent to Argelia.

Ciber is working with TPS, the company's representative in that country, combining a technical support team and a stock of replacement parts to cover the demand. "The combination of the quality of our equipment and the technical-commercial support provided by TPS is the big secret behind our current success," emphasized Guilherme Ratkiewicz Rodrigues, Ciber's responsible party for the African market. Beginning in the second semester, there are plans to begin work on a set of actions to serve a different niche: that of small equipment, with the launch of the Kompakt line.

## Guaranteed acceptance

The asphalt plants sold by Ciber are greatly appreciated by Argelian clients because of the simplicity of the technological solutions used in their design, which provide an excellent cost-

quality ratio. According to Ahcène Laimeche, of TPS, the vastness of the Argelian territory as well as the distribution of the



Ciber and TPS team in Algeria

projects makes the plants' mobility a great plus for contractors.

Both private and public companies are among Ciber's group of Argelian clients. "There is a slight predominance of private sector companies, mainly due to their greater management flexibility in comparison with the government agencies," emphasized Laimeche. With the Argelian government's decision to encourage investment programs in 2009, it is expected that the plant's sales structure will be adjusted to serve the market in this new year.

## Hot market

The public works segment in general, especially road construction, has been growing significantly in Argelia, with the establishment of ambitious projects that are a result of different programs in the area of infrastructure. Among the more significant projects is the East-West expressway, which the country calls the project of the century. The Trans-Sahara Highway also represents an important regional undertaking, as it will connect northern and southern Argelia to countries in the Sahel belt – a region that separates the Sahara Desert from Central Africa. "This demonstrates the desire national government authorities have to give new life to a sector that is vital to economic development," Laimeche analyzes.

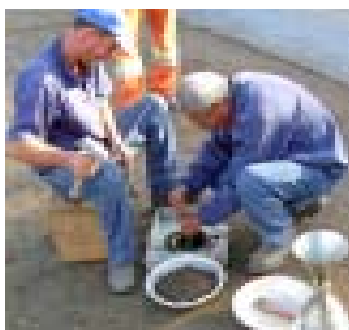


# Recycling: Quality control, checks and tests

Alexandre Machado Correa Paulifresa Fresagem e Reciclagem's Recycling Coordinator

**T**he main objective of recycling work is to build a new pavement structure which meets the demands of planners. Normally, these demands are contained in project specifications, which define the two most important requirements for the recycling: material quality and thickness of the recycled layer.

For on-site soil stabilization and/or cold



Compaction test



Study of the base layers



recycling work on a road's cap and base – with or without the addition of cement and with or without the addition of aggregates – a series of checks and tests are carried out before and after the recycling process. This analysis is fundamental to the project's definition, as well as towards compliance with

requirements, normally specified by DNIT, DER and ABNT rules, and in the case of road concessionaire companies, those companies' own specifications as well.

Examples of tests and requirements:

On the road
Cement, aggregate and mixture sample collection for particle analysis (DNER-ME 080/94)
Mixture moisture content (Stove-top Rapid Method)
"On-site" density DNER-ME (092/94)
Deflection - Benkelman Beam (DNER ME-24)
Extraction of testing bodies after 7 days of curing, for cracking under pressure and skid (DER / PR ES-P 33/05)
In the laboratory
Fine aggregate sand equivalent (DNER-ME 054/97)
Recycled particle analysis (DNIT 313/97)
Particle analysis of added materials (DNER-ME 083/98)
Cement fineness (ABNT NBR 11579/91)
Compaction test (ABNT NBR 7182)
Collection of samples for axial compression tests (DER / PR ES-P 33/05)
Collection of samples for skid resistance tests (DER / PR ES-P 33/05)
Axial compression test (ABNT NBR 5739)
Skid resistance test (ABNT NBR 7222)
Examples of tests carried out on a recycling project executed by the company Paulifresa, with addition of Portland cement, for the concessionaire Rodonorte in 2008, where a Wirtgen WR 2000 Recycler/Stabilizer was used.

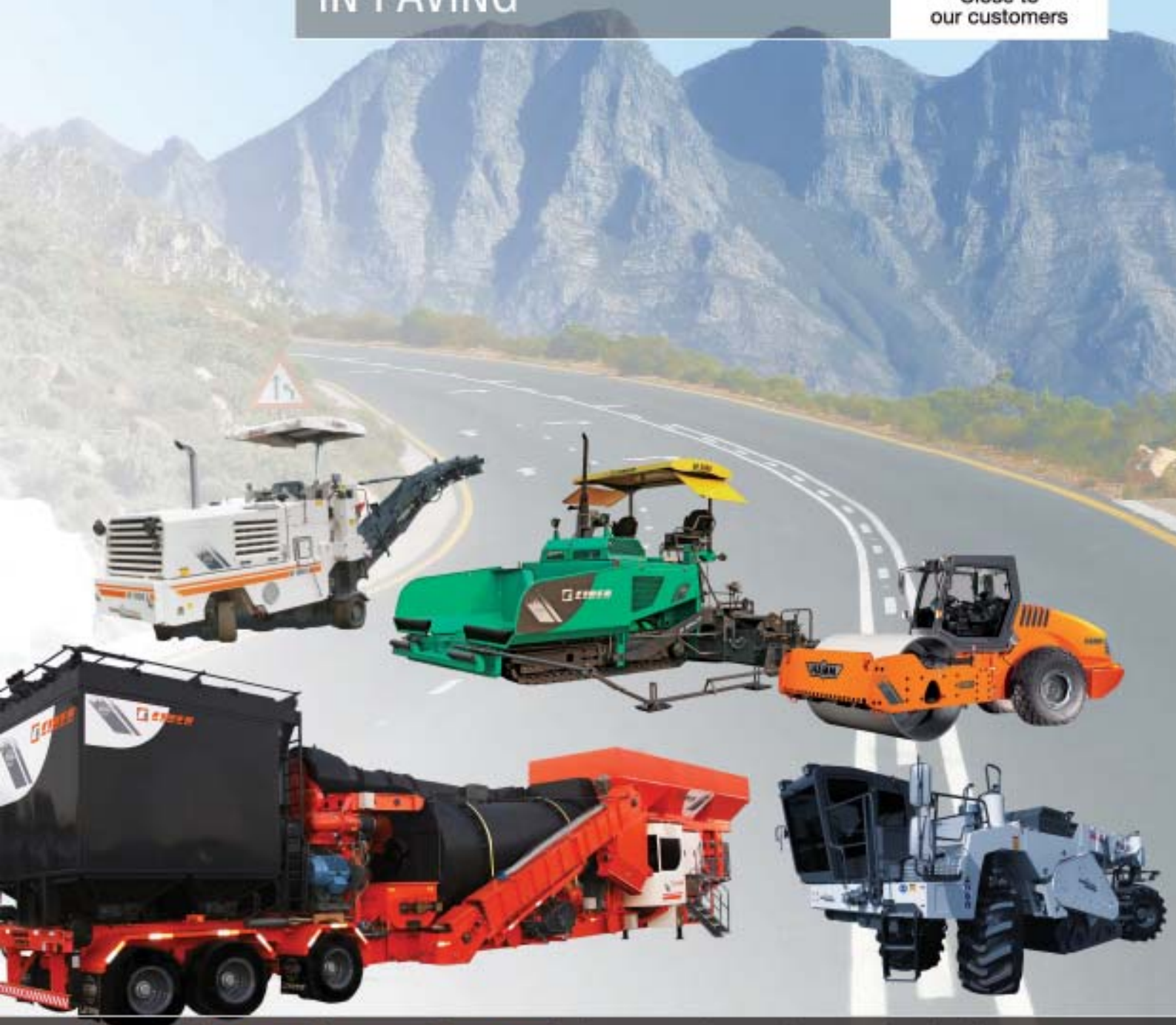
Wirtgen's line of recyclers is made up of a wide range of equipment capable of meeting the requirements of practically all kinds of cold recycling projects. Among them, we would like to emphasize our models WR 2000 and WR 2400, equipment that is perfectly adapted to our market, due to the normal recycling width and cutting depth of our highways. As for their characteristics, we can also point out that they combine the functions of a recycler and a soil stabilizer in a single piece of equipment. Their unique water injection system, used to adjust moisture, allows the equipment to operate within an excellent moisture range almost 100% of the time.

More information at [www.paulifresa.com.br](http://www.paulifresa.com.br) or (55-11) 4031-2001

# CIBER LEADING TECHNOLOGY IN PAVING



Close to  
our customers



ROAD AND MINERAL TECHNOLOGIES

Learn more about our integrated product line:

Asphalt Plants	Slipform Pavers
Cold Pre-Mix plants/RCC	Recyclers/Stabilizers
Pavers	Cold Milling Machines
Compactors	Surface Miners

[www.wirtgen-group.com](http://www.wirtgen-group.com)

Ciber Equipamentos Rodoviários Ltda.  
Rua Senhor do Bom Fim, 177 . 91140-380 Porto Alegre - RS - Brasil  
Fone: (51) 3364.9200 . Fax : (51) 3364.9222  
[ciber@ciber.com.br](mailto:ciber@ciber.com.br)  
[www.ciber.com.br](http://www.ciber.com.br)



# EQUIPMENT THAT MEETS ALL YOUR WORK NEEDS



Close to  
our customers

## ADVANCED SERIES

### Counterflow Asphalt Plants

- Accurate and easy-to-operate control system
- External mixer with double shafts that ensures an excellent mixture
- Filtration system through bag-house filters: solutions that exceed the most rigid environmental standards
- Compact, easy transport and install, with high-quality productivity



*Advanced*  
SERIES



ROAD AND MINERAL TECHNOLOGIES

[www.wirtgen-group.com](http://www.wirtgen-group.com)

Ciber Equipamentos Rodoviários Ltda.  
Rua Senhor da Boa Fé, 177 - 911-00-380 Porto Alegre - RS - Brasil  
Phone/Fax: +55 51 3384 8200  
[ciber@ciber.com.br](mailto:ciber@ciber.com.br)  
[www.ciber.com.br](http://www.ciber.com.br)