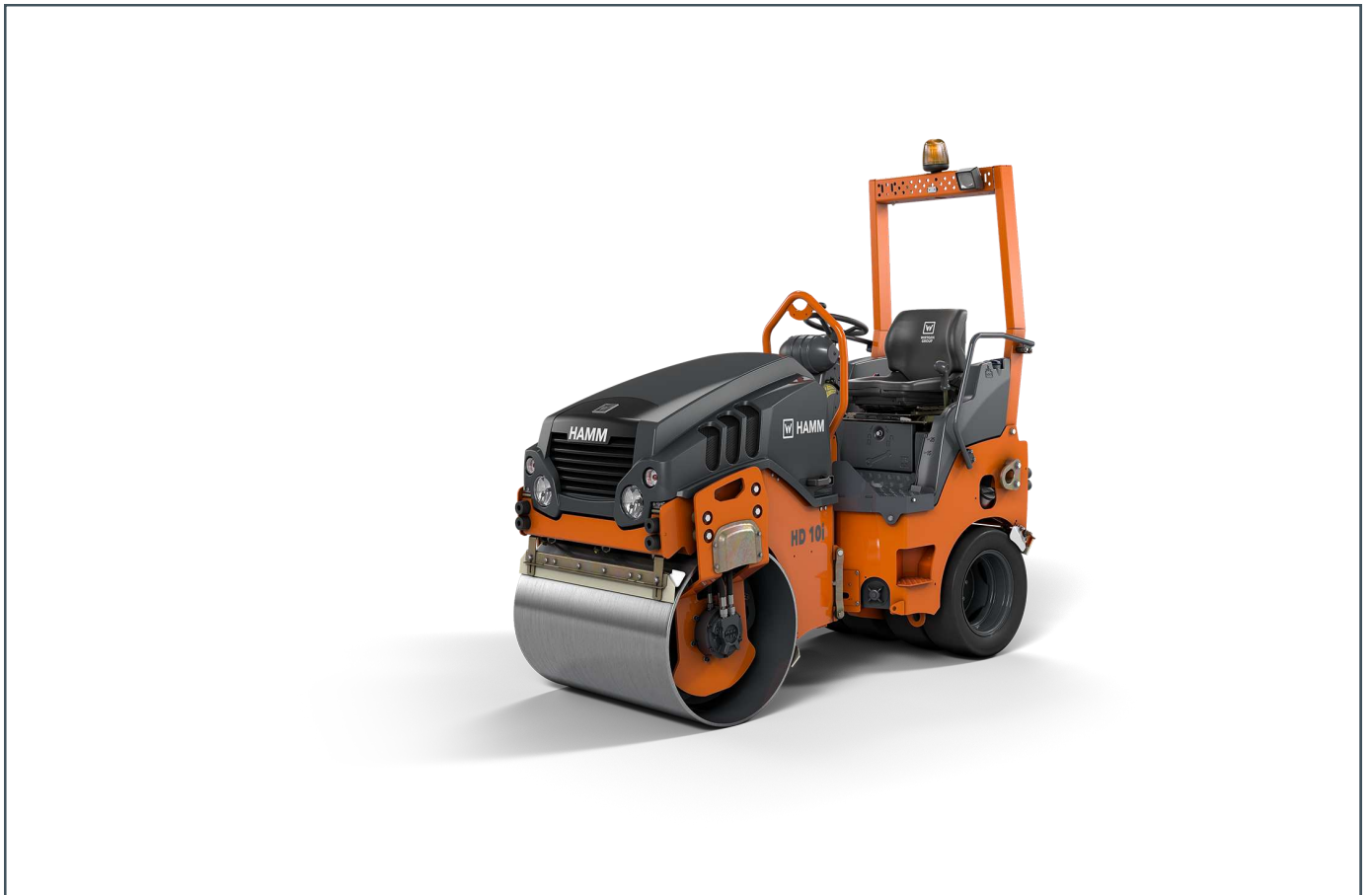


HD 10i VT

Tandem roller with vibrating roller drum and set of tires

Tandem rollers Series HD CompactLine / Series H251










HIGHLIGHTS HD CompactLine

- > Simple, intuitive and language-neutral control
- > Simple transport, simple loading
- > Ergonomic driver platform
- > Excellent view of drum edge, machine and construction site environment
- > Compact dimensions

Machine dimensions		
Total length (L)	mm • in	2530 • 99.6
Width (B)	mm • in	1110 • 43.7
Total height (H)	mm • in	2475 • 97.4
Drum width (X)	mm • in	1000 • 39.4
Height, loading, min. (HI)	mm • in	1752 • 69.0



EU Stage V /
EPA Tier 4

TECHNICAL DATA		Unit	HD 10i VT
	Weights		
Operating weight with ROPS	kg • lbs		2385 • 5,259
Operating weight, max.	kg • lbs		3110 • 6,858
Static linear load, front	kg/cm • lbs/in		12,1 • 67.8
French classific., data/class			12,1/PV2
	Machine dimensions		
Total length	mm • in		2530 • 99.6
Total height with ROPS	mm • in		2475 • 97.4
Height, loading, min.	mm • in		1752 • 69.0
Wheelbase	mm • in		1700 • 66.9
Total width	mm • in		1110 • 43.7
Max. working width	mm • in		1050 • 41.3
Curb clearance, left/right	mm • in		570/570 • 22.4/22.4
Turning radius, inside	mm • in		2470 • 97.2
	Drum dimensions		
Drum width, front	mm • in		1000 • 39.4
Drum diameter, front	mm • in		720 • 28.3
Drum thickness, front	mm • in		15 • 0.6
Drum type, front			Smooth/non-split
Track offset, left/right	mm • in		0/50 • 0.0/2.0
	Wheel dimensions		
Size of tires, rear			205/60-R15
Number of tires, rear			4
	Diesel engine		
Manufacturer			KUBOTA
Type			D1803-CR
Number of cylinders			3
Power rat. ISO 14396, kW/PS/rpm			24.0/32,6/2200
Power rating SAE J1995, kW/HP/rpm			24,0/32,2/2200
Emission standard			EU Stage V / EPA Tier 4
Exhaust gas after-treatment			DOC-DPF
	Drive		
Speed, infinitely variable	km/h • mph		0 - 10,2 • 0.0 - 6.3
Climbing ability, vibration on/off	%		30/40
	Vibration		
Vibration frequency, front, I/II	Hz • vpm		65/51 • 3,900/3,060
Amplitude, front, I/II	mm • in		0,45/0,45 • .018/.018
Centrifugal force, front, I/II	kN • lbs		43/26 • 9,675/5,850
	Steering		
Oscillation angle +/-	°		8
Steering, type			Articulated steering
	Sprinkler system		
Water sprinkler, type			Pressure
	Tank capacity/Fill capacity		
Fuel tank, capacity	L • Gal		42 • 11.1
Water tank, capacity	L • Gal		180 • 47.6
Additive tank, capacity	L • Gal		18 • 4.8
	Sound level		
Acoustic power LW(A), sticker	db(A)		106
Acoustic power LW(A), measured	db(A)		102

EQUIPMENT

12 V outlet, 3-point articulation, Dashboard with displays, indicator lights and switches, Dashboard cover, lockable and weather-resistant, Pressure water sprinkling with interval switch, Operator's platform with entry from both sides, Left and right drive lever, Mechanical battery isolation switch, Track offset, mechanical, Automatic vibration system, Water filtering (triple), Central lifting bracket, Central water drain, Lighting package as per road traffic regulations

OPTIONAL EQUIPMENT

Plastic scraper, foldable, ROPS, foldable, Safety belt monitoring device, Protective roof, Edge pressing and cutting equipment, Edge pressing and cutting equipment, track indicator, Chip spreader, Thermal aprons, All-wheel lock, Anti-freeze injection, HAMM Compaction Meter (HCM), Automatic engine-off function, HAMM Temperature Meter (HTM), Telematics system, interface, Working light, Rotating beacon, Drum edge lighting, Cup holder, Water drain valve, Tow eye, front, Tow hitch

WIRTGEN AMERICA

6030 Dana Way
 Antioch, TN 37013
 Phone +1 615-501-0600
 Fax +1 615-501-0691
 info.america@wirtgen-group.com
 www.wirtgen-group.com/america

HAMM AG

Hammstraße 1
 D-95643 Tirschenreuth
 Tel +49 9631 80-0
 Fax +49 9631 80-111
 www.hamm.eu

