



HAMM

PRODUCTS



A factory full of innovations



Where the heart of compaction beats

In the heart of Europe, surrounded by a wonderful region full of ponds in the north of Bavaria, lies Tirschenreuth. There, in 1878, Franz and Anton Hamm founded the "Maschinenfabrik Gebr. HAMM" firm. Since the beginning of the 20th century, our company has concentrated on the manufacture of rollers for road building. From that time on, HAMM has been the driving force and trendsetter in the industry. Many technologies and solutions that have become the standard in the compaction sector were developed by HAMM. Today, HAMM is the world market leader in the road roller segment.

At the parent plant in Tirschenreuth, a team of highly motivated engineers and technicians work to develop the rollers. The extensive machine programme encompasses various tandem rollers, a wide choice of compactors as well as pneumatic tyre rollers. Modern solutions with which to optimise the compaction process round off the product portfolio. These allow HAMM to offer practical, tailor-made solutions for every compaction task in road building and earthwork.

We produce all HAMM rollers as well as the drums at the Tirschenreuth factory. State-of-the-art production processes allow every machine to be finished individually to customer specification. Extensive quality testing accompanies the production process.



1 ADMINISTRATIVE BUILDING

The administrative building houses the sales and development centre, customer support and the majority of the non-technical departments. The technical highlight of the building is the energy provision: Below the car park, a geothermal energy plant collects renewable energy from the depths, which is used for particularly environmentally friendly cooling or heating.



2 DRUM FACTORY

In the drum factory, we produce the drums for all HAMM rollers.



3 LOGISTICS CENTRE

From here, state-of-the-art warehouse systems with highly optimised processes supply our production with all the parts they need.



4 ASSEMBLY HALL FOR LARGE MACHINES

This is where the HAMM rollers are produced on a highly efficient cyclic assembly line.



5 TESTING HALL

Before delivery, every HAMM roller must pass a comprehensive testing programme on one of our testing bays.



6 CTT

We train roller operators as well as workshop and service technicians in our modern CTT (Centre for Training and Technology).



7 SHIPPING

In this area, our shipping team prepares the rollers for delivery to customers.



8 ENDURANCE TEST TRACK

Endurance testing for new developments: Before series production can begin, we subject our prototypes to months-long endurance tests on two testing facilities that include steep slopes, moguls and a vibration section. Here, the rollers run autonomously.

Product programme

State-of-the-art technology for road building and earth work

SERIES H COMPACTLINE



5 models
5 - 7 t
HRC

Pages 6/7

SERIES 3000



35 models
10 - 25 t
LRC

Pages 12/13

SERIES H



22 models
11 - 25 t
HRC

Pages 8/9

SERIES HD COMPACTLINE



35 models
1.5 - 4.5 t
LRC / HRC

Pages 14/15

SERIES VC



2 models
25 t
LRC / HRC

Pages 10/11

SERIES HD+



58 models
7 - 14 t
LRC / HRC

Pages 16/17



SERIES DV+



8 models
7 - 9 t
HRC

Pages 18/19

SERIES HD



10 models
7 - 11 t
LRC

Pages 20/21

SERIES HP



4 basic versions
8 - 28 t (Ballasting)
LRC / HRC

Pages 22/23



Easy
Drive

HAMM
Compaction
Quality

**POWER
HYBRID**

Exhaust emission legislation abbreviations

LRC: Low Regulated Countries (up to EPA Tier 3)

HRC: High Regulated Countries (EPA Tier 4, EU Stage V)

Compact climbers

All-rounders for earth work



Great compaction force – even for small sites

The exceptionally small compactors in the H CompactLine series offer an enormous climbing ability of up to 60% and maximum ground clearance, because the drive is provided via modern wheel motors. In addition, the 3-point articulation together with a very short wheel base ensures optimum driving and handling characteristics. The H CompactLine machines are also very short, making them predestined for cramped construction sites and compaction on uneven ground.

The operator's platform or cabin of the H CompactLine stand out for their exceptional visibility and ease of operation. In addition, drivers can very quickly adjust the ergonomically optimised workspace to their individual height and weight. This makes the H CompactLine models perfect for machine rental.



H COMPACTLINE



VISIBILITY

Safety and high compaction quality thanks to the outstanding overview of the machine and its surroundings - from any sitting position.



SLOPE ANGLE AND CLIMBING ABILITY

Large slope angle and high-performance power train enable compaction on inclines of up to 60%.



ERGONOMIC WORKSPACE

Seat with multiple adjustment options and operating elements provide an ergonomic workspace for long, concentrated working.



COMPACT DIMENSIONS

Easy to manoeuvre, even on cramped construction sites, thanks to the compact design.



3-POINT ARTICULATION

Ensures optimum driving comfort and outstanding off-road mobility, absorbs shocks and enables safe manoeuvring, even on rough terrain.



H CompactLine	Basic data			Drums / variants			Equipment and options	
	Weight class (t)	Drum width (mm)	Working width max. (mm)	V	VIO	P	Padfoot segments	Dozer blade
Machines in accordance with EPA Tier 4 / EU Stage V								
H 5i	5	1370	55.4	•		•	•	•
H 7i	7	1680	55.4	•	•	•	•	•

V: Vibration

VIO: Vibration - Oscillation

P: Padfoot drum

Powerful heavyweights for earth work

Powerful and easy to operate



Clean compaction force

The H series compactors are powerful professionals with great compaction force for today's earth work. Off-road, the compactors display their qualities to the full because, thanks to the 3-point articulation and the large slope angles at the front and rear, they are extremely manoeuvrable with optimum driving stability. Here, modern engines with future-proof technology ensure very low emissions.

The cabin or operator's platform is ergonomically optimised and the compactors are especially convenient and simple to operate thanks to Easy Drive. In addition, there is an excellent view of the drum and the working environment around the machine. Maintenance, too, is straightforward thanks to the wide-opening engine hood. This simplifies access to the filters and daily maintenance items.



H

**SLOPE ANGLE AND CLIMBING ABILITY**

Large slope angle and high-performance power train enable compaction on inclines in excess of 60%.

**VISIBILITY**

Safety and high compaction quality thanks to the outstanding overview of the machine and its surroundings – from any sitting position.

**LARGE LINEAR LOAD**

Extremely high linear loads – up to 78 kg/cm according to the model.

**ERGONOMIC WORKSPACE**

The Easy Drive operating concept and many convenience options make for an ergonomic workspace and long, concentrated working.

**3-POINT ARTICULATION**

Ensures optimum driving comfort and outstanding off-road mobility, absorbs shocks and enables safe manoeuvring, even on rough terrain.



H	Basic data			Drums / variants			Equipment and options				
	Weight class (t)	Drum width (mm)	Engine power (kW)	V	VIO	P	Easy Drive	Vibration plate	Auxiliary heating	Dozer blade	Padfoot segments
Machines in accordance with EPA Tier 4f / EU Stufe IV											
H 11i	11	2140	85	•		•	•		•	•	•
H 12i	12	2140	85	•		•	•		•	•	•
Machines in accordance with EPA Tier 4 / EU Stufe V											
H 13i	13	2140	115	•	•	•	•	•	•	•	•
H 13i C	13	2140	115	•		•	•	•	•	•	•
H 14i	14	2140	115	•		•	•	•	•	•	•
H 16i	16	2140	115	•		•	•	•	•	•	•
H 18i	18	2140	160	•		•	•		•	•	•
H 20i	20	2140	160	•		•	•		•	•	•
H 20i C	20	2140	160	•		•	•		•	•	•
H 25i	25	2140	160	•			•		•		
H 25i C P	25	2140	160			•	•		•		

V: Vibration

VIO: Vibration – Oscillation

P: Padfoot drum

C: Climbing (high gradability)

One roller for two jobs

Rock crushing and compacting

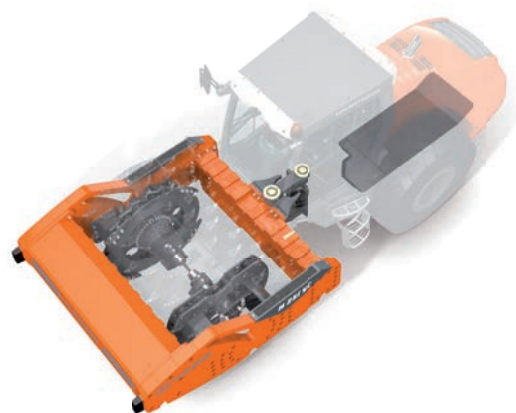


Great versatility thanks to clever VC tool changing system

The VC compactors with crusher drum crush and compact rock in one operation. This significantly simplifies and speeds up many processes, ultimately saving time and resources.

The VC tool changing system is used to equip the drums with special cutting tools. With these tools, they can crush stone, loosen rock, grade or prepare routes in rocky terrain, maintain underground accessways and much more besides. A further option is to fit the tool holders with padfoot inserts, making the VC compactor ready to compact cohesive soils.

In order to master these tasks effortlessly, the VC compactors are equipped as heavy-duty machines, able to tackle slopes of up to 60%, crushing and compacting as they go, thanks to their high-performance power trains.





VC

**ROBUST SPECIFICATION**

Extremely robust design with heavy-duty components.

**CLIMBING ABILITY**

High-performance power trains and the Hammtronic electronic machine management system fitted as standard enable an exceptional climbing ability of up to 60%.

**VC TOOL CHANGING SYSTEM**

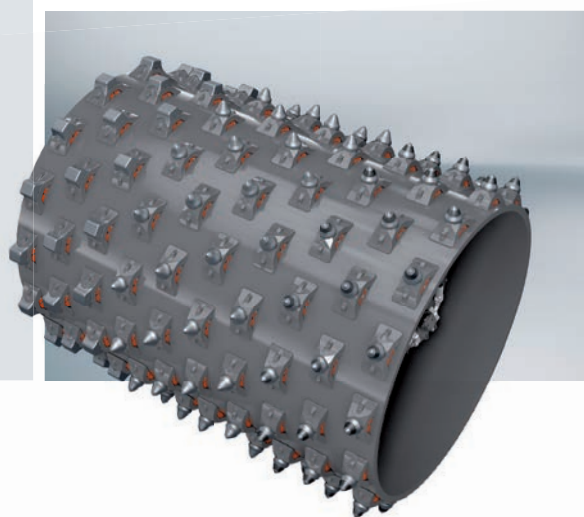
Fast tool-changing for high productivity. May also be easily carried out on-site.

**HIGH POINT LOAD**

High crushing force thanks to maximum point load of up to 50 t per cutting tool.

**3-POINT ARTICULATION**

Ensures outstanding traction and off-road mobility, absorbs shocks and enables safe manoeuvring, even on rough terrain.



VC	Basic data			Equipment and options			
	Weight class (t)	Drum width (mm)	Engine power (kW)	Hammtronic	HAMM Compaction Meter	VC quick-change toolholder system	Easy Drive
Machines in accordance with EPA Tier 3							
3625 HT VC	25	2220	155	•	•	•	
Machines in accordance with EPA Tier 4 / EU Stufe V							
H 25i VC	25	2220	160	•	•	•	•

VC: Crusher drum
HT: Hammtronic

The tried and tested compactors

Flexible use in earth work



Robust engineering for all markets

The 3000 series compactors greet drivers with a spacious cabin or operator's platform and an inviting workspace. Operation of the compactors is extremely easy and the visibility they offer is also top-class.

While carrying out compaction work on-site, the compactors stand out for their high compaction power, small turning circle and low noise emissions. Their fuel consumption is also impressively low, especially on the models equipped with the Hammtronic machine management system. It is also responsible for a very good climbing ability of over 60%.



3000



VISIBILITY

Safety and high compaction quality thanks to the outstanding overview of the machine and its surroundings – from any sitting position.



ROBUST ENGINEERING

The intelligent design has proved its worth for many years all over the world and stands out for its robust execution.



3-POINT ARTICULATION

Ensures optimum driving comfort as well as outstanding traction and off-road mobility, absorbs shocks and enables safe manoeuvring, even on rough terrain.



CLIMBING ABILITY

The ingenious power train concept provides great climbing ability, especially on rollers equipped with Hammtronic.



SIMPLE MAINTENANCE AND SERVICING

All daily maintenance items are located in readily accessible positions on the same side of the machine – the most important prerequisite for fast checks.



3000	Basic data			Drums / variants			Equipment and options		
	Weight class (t)	Drum width (mm)	Engine power (kW)	V	VIO	P	Hammtronic	Padfoot segments	Dozer blade
Machines in accordance with EPA Tier 2									
3410	10	2140	98	•		•		•	
3411	11	2140	98	•		•		•	
Machines in accordance with EPA Tier 3									
3410	10	2140	100	•		•		•	•
3411	11	2140	100	•		•		•	•
3412	12	2140	100	•	•	•	•	•	•
3414	14	2140	100	•	•	•	•	•	•
3516	16	2140	155	•		•	•	•	•
3518	18	2220	155	•		•	•	•	•
3520	20	2220	155	•		•	•	•	•
3625	25	2220	155	•		•	•		

V: Vibration

VIO: Vibration – Oscillation

P: Padfoot drum

The agile all-rounders

The wasp-waist rollers



Top-quality compact rollers

The articulated compact rollers in the HD CompactLine, with operating weights between 1.5 and 4.5 t, are real all-rounders for asphalt construction, earth work and landscape gardening. Their operation is extremely easy and calls for no special language skills. Moreover, the wasp-waist rollers impress on account of their optimum visibility and outstanding driving and handling characteristics attributable primarily to the 3-point articulation.

With more than 30 models and drum widths from 0.80 to 1.38 m, the HD CompactLine covers the entire spectrum of compact rollers with vibrating, oscillation and combi rollers. In addition, there are numerous options such as chip spreaders or a cabin for the larger models, as well as various lighting options.

HD CompactLine	Basic data				Equipment and options		
	Weight class (t)	Drum width (mm)	Engine power (kW)	Wheel load (t)	Track offset	ROPS cabin	HAMM Temperature Meter
Machines in accordance with EPA Tier 3							
HD 14 TT	4	1276	34.6	0.5	•	•	•
Machines in accordance with EPA Tier 4 / EU Stage V							
HD 14i TT	4	1276	37.4	0.5	•	•	•

TT: 2 set of tyres



HD COMPACTLINE



VISIBILITY

The wasp waist and longitudinally mounted engine provide an excellent view of the drum edges, machine and surrounding construction site.



EASY TRANSPORT, EASY LOADING AND UNLOADING

Central lifting point and many lashing points for fast and safe loading/unloading.



COMPACT DIMENSIONS

High-quality compaction, even in cramped conditions, thanks to compact dimensions.



INTELLIGENT WATER SYSTEM

Dependable water supply thanks to triple filtration; additional activation via foot switch. Easy complete draining.



LARGE ROLLER DRUM DIAMETERS

Roller drums with large diameters actively reduce tearing and overlapping and promote high-quality compaction.



HD CompactLine	Basic data				Drums / variants			Equipment and options					
	Weight class (t)	Drum width (mm)	Engine power (kW)	Working width max. (mm)	VV	VO	VT	Clear-Side	Track offset	ROPS cabin	Chip spreader	HAMM Compaction Meter	HAMM Temperature Meter
Machines in accordance with EPA Tier 3 / EPA Tier 4 / EU Stage V													
HD 8	1.5	800	16.8	862	•			•	•				
HD 10C	1.5	1000	16.8	1064	•		•	•	•				
Machines in accordance with EPA Tier 3													
HD 10	2.5	1000	22.9	1050	•	•	•		•		•	•	•
HD 12	2.5	1200	22.9	1250	•	•	•		•		•	•	•
HD 13	4.0	1300	34.6	1350	•	•	•		•	•	•	•	•
HD 14	4.5	1380	34.6	1430	•	•	•		•	•	•	•	•
Machines in accordance with EPA Tier 4 / EU Stage V													
HD 10	2.5	1000	18.5	1050	•	•	•		•			•	•
HD 10i	2.5	1000	24	1050	•	•	•		•		•	•	•
HD 12	2.5	1200	18.5	1250	•	•	•		•			•	•
HD 12i	2.5	1200	24	1250	•	•	•		•		•	•	•
HD 13i	4.0	1300	37.4	1350	•	•	•		•	•	•	•	•
HD 14i	4.5	1380	37.4	1430	•	•	•		•	•	•	•	•

VV: Vibration (front) - Vibration (rear)

VO: Vibration (front) - Oscillation (rear)

VT: Vibration (front) - Set of tyres (rear)

C: Clear Side (single-sided drum suspension)

First-class compaction

Uncompromisingly good



Outstanding handling, high compaction power

The articulated tandem rollers in the HD+ series cover the range between 7 and 14 t with over 50 models. The XXL cabin or platform offers spacious and comfortable working conditions. From this workspace, drivers have an excellent overview of the drums, water sprinkling system and surrounding area.

With their exceptionally favourable weight distribution, the HD+ series rollers stand out in terms of handling and compaction characteristics. Whether straights, slopes, bends or roundabouts: these rollers quickly produce perfectly smooth surfaces. With easy edge-finishing in mind, HAMM has made the track offset extra large. And last but not least, the HD+ series rollers are equipped with large water and diesel tanks for long working days without refilling stops. This greatly boosts productivity.





HD+



VISIBILITY

Safety and high compaction quality thanks to the outstanding overview of the machine and its surroundings – from any sitting position.



OPERATION

Safe, intuitive operation thanks to clear, language-neutral operating elements and an ergonomically optimised workspace.



HIGH COMPACTION POWER

With large drum diameters and widths, and with a working weight to match, the HD+ series rollers compact quickly and to a very high quality.



LARGE WATER TANKS

Even weight distribution on account of two large water tanks with interconnecting pipework.



3-POINT ARTICULATION

The special kinematics ensure even weight distribution, first-rate directional stability and outstanding driving stability.



HD+	Basic data				Drums / variants							Equipment and options		
	Weight class (t)	Drum width (mm)	Engine power (kW)	Working width max. (mm)	VV	VV-S	VO	VO-S	VT	VT-S	OT	Easy Drive	Track offset	Chip spreader
Machines in accordance with EPA Tier 3														
HD+ 90	9	1680	100	1850	•		•		•				•	
HD+ 110	11	1680	100	1850	•		•		•				•	
HD+ 120	12	1980	100	2150	•		•						•	
HD+ 140	14	2140	100	2310	•		•						•	
Machines in accordance with EPA Tier 4														
HD+ 70i	7	1500	55.4	1635	•		•		•				•	•
HD+ 80i	8	1680	55.4	1815	•	•	•	•	•	•	•		•	•
Machines in accordance with EPA Tier 4 / EU Stage V														
HD+ 70i	7	1500	55.4	1635	•		•		•				•	•
HD+ 80i	8	1680	55.4	1815	•	•	•	•	•	•	•		•	•
HD+ 90i PH	9	1680	55.4	1850	•	•	•	•	•	•		•	•	
HD+ 90i	9	1680	85	1850	•	•	•	•	•	•		•	•	•
HD+ 110i	11	1680	85	1850	•		•		•			•	•	•
HD+ 120i	12	1980	115	2150	•		•					•	•	
HD+ 140i	14	2140	115	2310	•		•					•	•	
Machines in accordance with EPA Tier 4 / EU Stage IV														
HD+ 90i	9	1680	85	1850	•	•	•	•	•	•		•	•	•
HD+ 110i	11	1680	85	1850	•		•		•			•	•	•

VV: Vibration (front) – Vibration (rear)

VV-S: Vibration, split (front) – Vibration, split (rear)

VO: Vibration (front) – Oscillation (rear)

VO-S: Vibration, split (front) – Oscillation (rear)

VT: Vibration (front) – Set of tyres (rear)

VT-S: Vibration, split (front) – Set of tyres (rear)

OT: Oscillation (front) – Set of tyres (rear)

PH: Power Hybrid

Rollers with clear vision

Powerful, precise and productive



The premium class for asphalt compaction

On the pivot-steered tandem rollers in the DV+ series, the Easy Drive operating concept ensures top-class ergonomics and ease of operation. From the fully glazed panoramic cabin with optimum visibility, the driver enjoys a good view of the drum edges, the edge pressing and cutting equipment and the construction site at all times. Additional viewing panels in the cabin floor also allow him an uninterrupted view of the drums or wheels.

Thanks to their pivot steering with very large track offset, the DV+ series rollers can be controlled very precisely in four different steering modes. In addition, the rollers are fitted with split vibrating drums as standard. Together with the uniform weight distribution and the automatic system for gentle acceleration and braking, they produce asphalt surfaces of impeccable smoothness – even in tight curves.



DV+



VISIBILITY

Safety and high compaction quality thanks to the outstanding overview of the machine and its surroundings – from any sitting position.



EASY DRIVE

Safe, intuitive operation thanks to clear, language-neutral operating elements and an ergonomically optimised workspace.



LONG WORKING INTERVALS

Highest productivity thanks to generously dimensioned fuel and water tanks.



WATER SYSTEM

Even weight distribution on account of two large water tanks with interconnecting pipework. Fast, safe replenishment via central pressurised filling system.



STEERING

Precise steering in all situations thanks to pivot steering with large turning angles, large track offset and four steering modes.



DV+	Basic data				Drums / variants				Equipment and options				
	Weight class (t)	Drum width (mm)	Engine power (kW)	Working width max. (mm)	VV-S	VO-S	VS-OS	VT-S	Easy Drive	Electric adjustment of the seat-operating unit	ROPS cabin	ROPS	Chip spreader
Machines in accordance with EPA Tier 4 / EU Stage V													
DV+ 70i	7	1500	55.4	2770	•	•	•	•	•	•	•	•	•
DV+ 90i	9	1680	74.4	3050	•	•	•	•	•	•	•	•	•

VV-S: Vibration, split (front) – Vibration, split (rear)

VO-S: Vibration, split (front) – Oscillation (rear)

VS-OS: Vibration, split (front) – Oscillation, split (rear)

VT-S: Vibration, split (front) – Set of tyres (rear)

The asphalt professionals

Sturdy and robust



At home on every construction site

The HD series tandem rollers are highly valued professionals for asphalt construction the whole world over. From the ergonomically optimised driver platform or spacious cab, the driver has everything in view: the drum, the water sprinkling

system and the surrounding construction site. High-quality compaction is assured thanks to the 3-point articulation, very small turning circle and large track offset.



HD



VISIBILITY

Excellent overview of the machine and construction site from every sitting position for safe, high-quality compaction.



ROBUST ENGINEERING

The intelligent design has proved its worth for many years all over the world and stands out for its robust execution.



LARGE SIDE CLEARANCE

Elevated side panels for large side clearance. Enables compaction right up to the edge.



3-POINT ARTICULATION

The special kinematics ensure even weight distribution, first-rate directional stability and outstanding driving stability.



SIMPLE MAINTENANCE AND SERVICING

All daily maintenance items are located in readily accessible positions on the same side of the machine – the most important prerequisite for fast checks.



HD	Basic data				Drums / variants			Options	
	Weight class (t)	Drum width (mm)	Engine power (kW)	Working width max. (mm)	VV	VO	VT	Track offset	Edge pressing and cutting equipment
Machines in accordance with EPA Tier 3									
HD 70	7	1500	55.4	1600	•		•	•	•
HD 75	8	1680	55.4	1780	•	•	•	•	•
HD 90	9	1680	100	1780	•	•	•	•	•
HD 110	11	1680	100	1780	•		•	•	•

VV: Vibration (front) – Vibration (rear)

VO: Vibration (front) – Oscillation (rear)

VT: Vibration (front) – Set of tyres (rear)

Innovation on 8 wheels

The flexible power packs



Modern concept for first-class compaction

The HP series pneumatic tyre rollers impress every step of the way in asphalt construction and earth work. Drivers enjoy a spacious and comfortable operator's platform available with a panoramic cabin or as an open version. An asymmetric frame and the intelligent machine design provide for excellent visibility. Another feature is the language-neutral operation. It makes work easier for drivers and ensures safe operation.

Well-thought-out solutions such as the intelligent ballasting concept provide for the best possible compaction results, as this allows the vehicle weight to be quickly adjusted on the construction site. In addition, the exceptionally versatile water sprinkling system with its innovative additive supply and the modern drive offer excellent quality and productivity. With a wide range of options available, the HP series rollers can also be adapted to regional requirements anywhere.



HP



VISIBILITY

Excellent overview of the machine and construction site from every sitting position for safe, high-quality compaction.



LARGE DRIVER PLATFORM / CABIN

Large, well-appointed panoramic cabin or large operator's platform.



EASY SERVICING

Convenient accessway to the operator's platform, can be easily folded down. Large footplates provide quick and easy access to the maintenance platform on the engine.



BALLASTING CONCEPT

Variable ballasting concept enables fast, optimum equipping of the machine.



SAFETY

Extremely powerful braking system for maximum safety.



HP	Basic data						Equipment and options						
	Weight class (t)	Working width (mm)	Engine power (kW)	Wheel load (t)	Operating weight min. (t)*1	Operating weight max. (t)*1	Easy Drive	Seat-operating unit moveable and rotatable	Front axle brake*2	Anti-Slip Control	Additional water tank	Additive sprinkling system	Thermal aprons
Machines in accordance with EPA Tier 3													
HP 180	8-18	2084	85	1.0 - 2.2	8.6	17.2		•		•	•	•	•
HP 280	10-28	2084	85	1.3 - 3.5	10.27	27.3		•	•	•	•	•	•
Machines in accordance with EPA Tier 4 / EU Stage IV													
HP 280i	10-28	2084	85	1.3 - 3.5	10.27	27.3	•	•	•	•	•	•	•
Machines in accordance with EPA Tier 4 / EU Stage V													
HP 180i	8-18	2084	55.4	1.0 - 2.2	8.6	17.2	•	•		•	•	•	•

*1 based on the flexible ballast weights

*2 front axle brake compulsory on machines with an operating weight of 20 t or more

HAMM AG
Hammstraße 1
D-95643 Tirschenreuth
Tel +49 9631/ 80-0
www.wirtgen-group.com/hamm

