

PowerFeeder

MT 3000-5 STANDARD & OFFSET



INNOVATIVE TECHNOLOGIES MADE BY VÖGELE

A full product range is the basis of our ability to cover our customers' every requirement anywhere in the world.

We secure our customers' success with innovative machinery and solutions. Being the Number 1 in innovative technologies is consequently one of the guiding principles of our business activities. We are not interested in engineering achievements purely for their own sake - our objective is to convert these achievements into solutions for our customers.

VÖGELE PRODUCT RANGE

MINI CLASS

- > Maximum pave width 3.5 m
- > Maximum laydown rate 300 t/h

COMPACT CLASS

- > Maximum pave width 5 m
- > Maximum laydown rate 350 t/h

UNIVERSAL CLASS

- > Maximum pave width 10 m
- > Maximum laydown rate 700 t/h

HIGHWAY CLASS

- > Maximum pave width 18 m
- > Maximum laydown rate 1800 t/h

SPECIAL CLASS

- > SprayJet
- > InLine Pave

POWERFEEDER

- > MT 3000-5 Standard
- > MT 3000-5 Offset

DASH 5 EQUIPPED FOR THE FUTURE

We deliberately skipped a generation for the new Dash 5 series of PowerFeeder and put all the features of our PowerFeeder on the test bench. The aim was to develop a generation of machines which have maximum output, yet keep pace with the breakneck speed of technical progress.

A paver perfectly set up for both the present and the future needs a flexible, modular system which can accommodate requirements as they come up. We have taken a fresh look at our PowerFeeder and identified four principles which have always been, still are and will continue to be key in the development of our machines.



User-friendly Operation

We always start with activities in the field, evaluating the experience of operating teams and integrating that knowledge in our new developments. We claim to deliver safety, maximum user-friendliness, self-explanatory handling and practical ergonomic features.



Process Automation

Technology leadership is part of VÖGELE's DNA: We develop our products innovatively on the basis of decades of experience, so that they meet global standards and keep on setting new benchmarks. Automating processes with assistance and control systems assures precision, efficiency and process stability.



Cost-efficiency

Time, money and cost-efficiency are key factors in the success of road construction. We keep an eye on our customers' absolute costs and find solutions to reduce setup times, improve logistics and increase machine availability.

HIGHLIGHT OVERVIEW

Perfectly equipped

DRIVE CONCEPT

01 Modern drive concept

> High conveying capacity with quiet, economical operation.

02 Powerful and efficient diesel engine

> Powerful VÖGELE Powerpack with an efficient 6-cylinder in-line engine, optimal cooling and economical operation (EU Stage V).

OPERATION

03 ErgoPlus 5

> The new PowerFeeder control concept offers improved operation of all relevant functions.

04 ErgoPlus 5 Premium Touch

> Various functions even easier to check - relevant areas monitored by an additional camera, for example.

AUTOMATION

05 Feed Assist

> Feed Assist allows processes to be saved and called back up automatically at the touch of a button. This makes work more efficient and safer.

MATERIAL FEED

06 Large material hopper

> 15 tonnes of capacity
> Rapid, simple positioning and emptying of feed vehicles.

07 PaveDock Assistant

> Straightforward communication between material feeder operators and truck drivers.

MATERIAL MANAGEMENT

08 Efficient conveyor belt heating

> The diesel heating reliably prevents mix cooling and adhering.

09 High-performance material handling

> Rapid material handling without loss, even under difficult conditions of use.

10 Pivoting conveyor

> The pivoting conveyor of the MT 3000-5 Offset opens up a huge range of applications.

11 Automatic cleaning system

> The automatic cleaning system prevents material build-up during the conveying process.



MT 3000-5 STANDARD & OFFSET

Maximum efficiency meets maximum ease of use

The new VÖGELE PowerFeeder MT 3000-5 Standard and MT 3000-5 Offset combine tried-and-tested VÖGELE technology with modern comfort functions - ensuring a consistently smooth material transfer and the highest paving quality with maximum efficiency.

In the process of transferring mix from trucks to road pavers, material feeders form a hub to guarantee a steady, efficient paving process and high paving quality especially on large-scale job sites.

To further enhance user-friendliness and productivity, both models are equipped with the innovative Dash 5 machine concept. These include the intuitive ErgoPlus 5 operating concept, the Feed Assist automatic functions and the PaveDock Assistant truck communication system.

A key factor in its high performance is the material handling concept: The material hopper, the optimised conveyor control system and the efficient conveyor heating system ensure rapid, loss-free material feeding. Both models have a throughput capacity of up to 1,200 tonnes per hour and can load a full lorry in just 60 seconds. The MT 3000-5 Offset also features a conveyor belt that can be swivelled by 55° - for maximum flexibility during material transfer.

ERGOPLUS 5 OPERATING CONCEPT



> A new operating concept, ErgoPlus 5, adapted and optimised for VÖGELE PowerFeeder, representing the next step in the evolution of the tried-and-tested operating concept from VÖGELE.

> Feed Assist allows processes to be saved and called back up automatically at the touch of a button.

MATERIAL HANDLING



> Rapid material handling without loss, even under difficult conditions of use.
> Rapid, simple positioning and emptying of feed vehicles.

EASY TRANSPORT



> With a track width of just 2.68 m and a ramp angle of 15°, the PowerFeeder fits onto standard low-bed trailers.
> Automated functions allow for quick switching between transport and working modes.



MORE POWER, LESS DOWNTIME

Non-stop feeding with the PowerFeeder

Extremely level and durable pavements are not a matter of chance, but are the result of clearly defined quality factors. Every interruption, e.g. because the supply of mix has run out, every jolt due to the lorry positioning on to the paver and any segregation of the mix is immediately evident in the quality of the built road. The use of a material feeder prevents this. As the link between mix lorry and road paver, it continuously supplies the paver with material - without any physical contact.

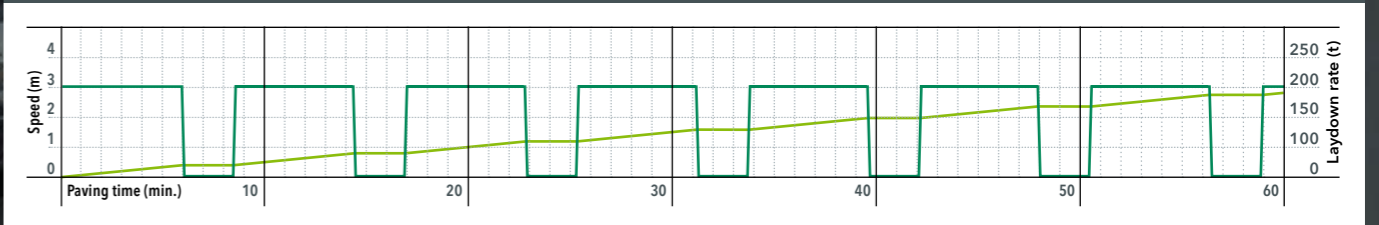
With the Dash 5 generation of material feeders, VÖGELE offers a complete package for machine and paving technology, the components of which build logically on one another and interact effectively. This ensures that all quality and cost-effectiveness requirements are met to the full.



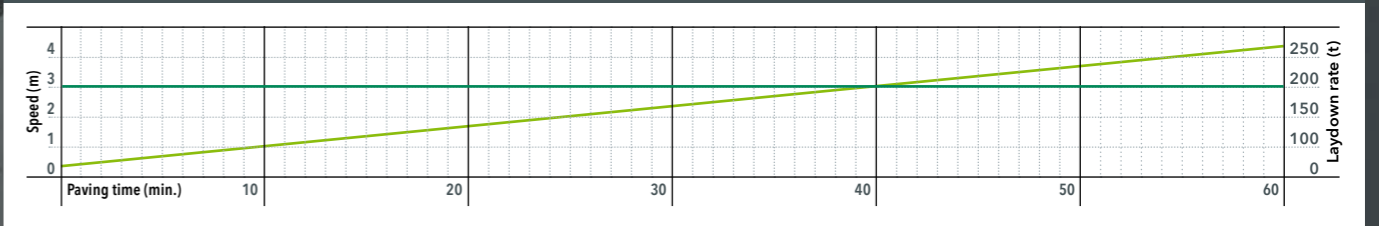
FOR COMPARISON: PERFORMANCE DATA WITH AND WITHOUT A MATERIAL FEEDER

In addition to improving quality, paving with a material feeder also significantly increases laydown rate without increasing pave speed. The following comparison makes this very clear.

Operation without a material feeder (in m/min.)



Operation with a VÖGELE PowerFeeder (in m/min.)



— = Pave speed in m/min. — = Laydown rate in t/h

Use without a material feeder

Without a material feeder, it is often impossible to avoid regular interruptions when switching mix trucks - in the graph, this can be seen in the form of repeated breaks in the dark green line. In the example calculated, laydown rate is estimated at 190 t/h.

Use with the VÖGELE PowerFeeder

With a VÖGELE PowerFeeder, the paver can pave continuously: the dark green line shows a constant pave speed without interruption. The result is a 30% higher laydown rate for the same pave speed.

INNOVATIVE TECHNOLOGY FOR PERFECT HANDLING

The VÖGELE material handling concept

Efficient receipt and transport

The wide material hopper with transverse augers allow a complete truckload to be received quickly without loss and then transported on. Optionally, conical screws ensure that the mixed material is conveyed in an even more homogeneous and residue-free manner. A sensor prevents the container walls from coming into contact with each other when the hopper front is open.

Consistent temperature from the beginning

The optimised diesel heating system reliably maintains the temperature of the mix from the very first truck load, prevents material from sticking to the conveyor belt and enables the transport of challenging materials such as low-temperature asphalt. A sensor for measuring the belt temperature ensures more precise heating control.

Reliable flow of mix - even on an incline

The trough-shaped conveyor belt ensures a steady flow of mix and mechanically prevents segregation. Even when the belt is sloped, it remains centred - this prevents material loss and minimises wear.

Automatic cleaning system

The MT 3000-5 has an automatic cleaning system to prevent material sticking. During operation, spray nozzles clean the container walls, rear walls, the bottom of the material hopper, the flap and the augers. The transfer and discharge hoppers are also sprayed with cleaning emulsion - ensuring consistently clean processes and minimal maintenance.



- 01 Wide material hopper
- 02 Innovative diesel heating
- 03 Trough-shaped conveyor belt
- 04 Automatic cleaning system for the material handling system

Wide material hopper
enables quick and loss-free material handling

Optimised diesel heating
keeps the mix at the right temperature

Automatic cleaning system
reduces material sticking

FEED WITH MIX SAFELY AND QUICKLY

Optimized material hopper

The design of the PowerFeeder Dash 5 Generation material hopper ensures clean, fast and safe feeding. The design and well-thought-out details ensure smooth operation and improve coordination with the truck in the dark. Highly visible reflectors and markings indicate the raised hopper front, the inner walls of the material hopper and the ends of the moulding bar.

These visual aids significantly improve the truck driver's ability to orientate themselves and make precise positioning easier - even in the dark, in backlight conditions or in difficult weather conditions.

Particularly on large construction sites, during night work or when under time pressure, this well-thought-out feature makes a significant contribution to health and safety and ensures that the feeding process runs smoothly.



Unique hopper geometry

ensures rapid positioning

Reflectors

for safe positioning in the dark

Fluorescent paint

characterise the hopper front



All materials in the process

The hydraulic hopper front ensures that all the mixed material is incorporated into the conveying process - without any loss or sticking.

Clean inlet area

An offset inlet and additional seals prevent material loss and keep the conveyor belt clean - ensuring long-lasting, trouble-free material handling.

Thermal homogenization

The crosswise conical augers in the material hopper ensure that the mix is thoroughly blended. Cooler asphalt from the outside is evenly mixed with the warmer material in the centre - ensuring a consistent temperature distribution. The homogenised mix is gently conveyed to the paver via the trough-shaped conveyor belt without any loss of quality.

VÖGELE > GOOD TO KNOW

High-performance system for rapid truck unloading

The large receiving hopper with a capacity of 15 t accommodates the mix quickly and without losses. The powerful hydraulically driven conveyor belt and the 300 mm diameter augers transport the mix onwards. The high-performance conveying concept combined with the large receiving hopper makes it possible to unload a truck carrying 25 t of mix completely in just 60 seconds.

NON-CONTACT TRANSFER OF MIX

Precision thanks to three redundant laser sensors



The non-contacting transfer of material is one of the key criteria for high paving quality. Decoupling the feeding from the paving process prevents any jolts from the feed lorry from being transmitted to the paver.

A non-contacting distance control system ensures the correct space between paver and material feeder. Three laser sensors permanently measure the space between the two machines so that the control system can automatically adjust the speed of the material feeder to that of the paver.

The system also automatically stops the paver colliding with the material feeder: If the material feeder has to stop unexpectedly, the paver is also stopped automatically as soon as the distance between the two machines falls below the set minimum.



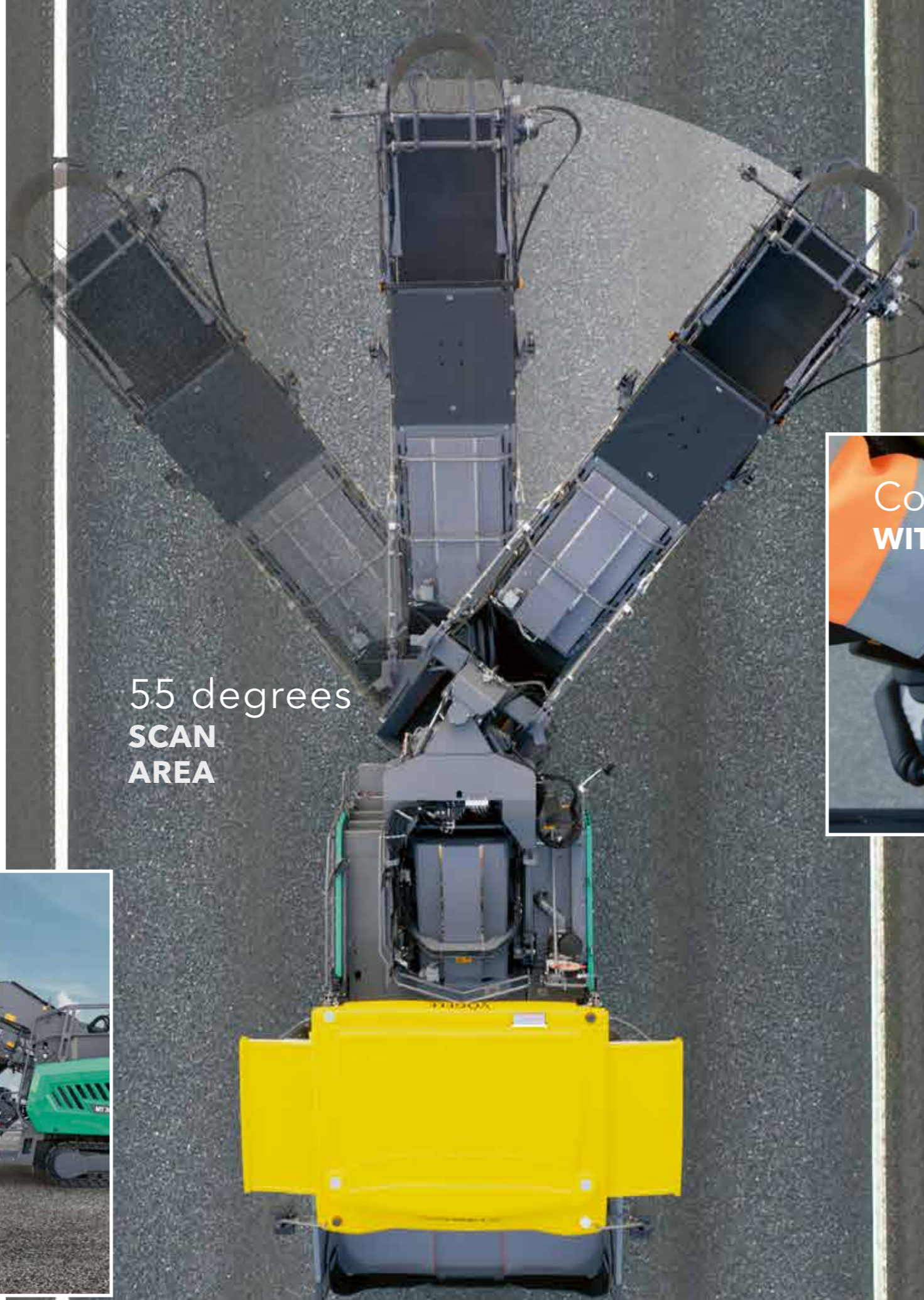
Redundant system comprising three individual laser sensors

The distance control system of VÖGELE PowerFeeders is a redundant system comprising three individual laser sensors. This means that the distance between paver and material feeder remains constant, even if one or more of the sensors is obscured, e.g. by workers moving past.

PIVOTING CONVEYOR FOR GREAT VERSATILITY

The conveyor, which can pivot 55 degrees to the left and right, ensures maximum versatility when using the MT 3000-5 Offset. With a maximum distance of 3.5 m from the outer edge of the feeder to the centre of the discharge point, the system adapts perfectly to a variety of site conditions.

In addition, the conveyor belt can be raised by up to 23 degrees from the horizontal position, reaching a transfer height of 3.6 m – optionally even up to 3.9 m. The MT 3000-5 Offset thus ensures precise and convenient material transfer.



55 degrees
**SCAN
AREA**



Control
WITH A JOYSTICK



Up to 3.9 m
TRANSFER HEIGHT

Precise operation of the pivoting conveyor

The pivoting conveyor of the MT 3000-5 Offset is controlled by a joystick in the armrest. The joystick ensures maximum precision when controlling the pivoting of the conveyor to the left or right, when raising or lowering it and when selecting conveying capacity. The Emergency Stop button halts the material transfer process immediately should a problem occur. For complex material feeding tasks involving the MT 3000-5 Offset, the pivoting conveyor can also be controlled by a second operator.

PERFECT COMMUNICATION DURING TRANSFER OF THE MIX

The PaveDock Assistant communication system

Among other factors, a constant material feed is essential for high-quality, even paving. PaveDock Assistant was developed specifically for this purpose. This assistance system handles communication between the material feeder and the truck driver.

The core of this communication system is formed by the signal lights mounted on the right and left of the PowerFeeder's hardtop and the associated controls on the paver operator's ErgoPlus 5 console. The signal lights have two clear signals - green for "Positioning" and red for "Stop".



01

- 01** Two signals which are easy to see, even from a distance: a red and a green diamond.
- 02** Controls for the signal lights on the paver operator's console.
- 03** To make it easier for the material truck to position itself, the rubber baffles to the left and right of the hopper front have reflective markings.



02



03



For work involving a VÖGELE InLine Pave train, type of mix can also be controlled by PaveDock Assistant. With IP mode activated, a red symbol is displayed for surface course material

or a green one for binder course - depending on the distance selected.





ERGOPLUS 5

Paver operator's console

The paver operator's console has a practical and extremely clear design. All functions are combined into logical groups, so that the operator finds each function exactly where expected.

Even with ErgoPlus 5, the function keys can be felt and operated with gloves. Once the button is pressed, work starts immediately. That is thanks to the "Touch and Work" principle. The desired function is therefore carried out directly - without repeated confirmation. Storage options and a 24 V socket for charging mobile devices have also been thought of.

The operation of individual functions such as steering, fine steering, PaveDock Assistant and Feed Assist is considerably simplified and logical to use. The MT 3000-5 is steered with an easy-to-grip Smartwheel. Fine steering is performed via a potentiometer, allowing the PowerFeeder to be finely controlled with extreme precision. This has been verified in field trials.

01 ErgoPlus 5 paver operator's console

- > ErgoPlus 5 paver operator's console with a lower profile.
- > A new operating concept, adapted and optimised for the PowerFeeder, based on the ErgoPlus 5 operating concept for pavers.
- > Improved, intuitive operation of all the relevant functions.

02 ErgoPlus 5 Premium Touch

- > Various functions even easier to check - relevant areas monitored by an additional camera, for example.

03 Storage options

- > Storage options as well as a 24 V socket for charging mobile devices

ERGOPLUS 5 PAVER OPERATOR'S CONSOLE

Clearly arranged in line with experience from the field

The operation of individual functions such as steering, fine steering, PaveDock Assistant and Pave Assist Plus has been considerably simplified and operation is logical. The MT 3000-5 is steered with an easy-grip SmartWheel. Fine steering is performed via a potentiometer, allowing the PowerFeeder to be finely controlled with extreme precision.

01 Propulsion and steering

All the functions for driving the PowerFeeder are brought together here. They include the traction main switch, the operating mode selector and the control knob for pave speed. For extended bends of a constant radius, the desired curve can be preselected on the right-hand side of the paver operator's console using the fine steering controls. The PowerFeeder automatically follows the desired curve for as long as this function is activated.

02 Material handling and material hopper

For material handling, the controls for conveyor and augers are on the left-hand side. The PaveDock Assistant and the material hopper are controlled from the right-hand side of the paver operator's console.

03 PaveDock Assistant

Using the controls for the PaveDock Assistant on the ErgoPlus 5 paver operator's console, the operator sends clear and easily understandable signals to the truck driver: Green for "Positioning" and "Red" for stop.

04 Display

The high-contrast colour display is brilliantly readable, even in poor lighting conditions. Vital information is shown on menu level 1. More paving settings, as well as information about the paver, can be found on the secondary levels.

05 ErgoPlus 5 Premium Touch

The ErgoPlus 5 paver operator's console is optionally available with Premium Touch as an extra. Premium Touch makes it even easier to view and control various functions, such as even easier control of various functions like monitoring relevant areas using additional cameras. With Premium Touch, the paver is perfectly prepared for digital road construction.

The standard version of the ErgoPlus 5 paver operator's console has an additional storage option instead of the touch display.



ERGOPLUS 5 PAVER OPERATOR'S PLATFORM

Better overview and more convenience, as well as ergonomics

Perfect visibility

on key points on the PowerFeeder

Ergonomic seat position

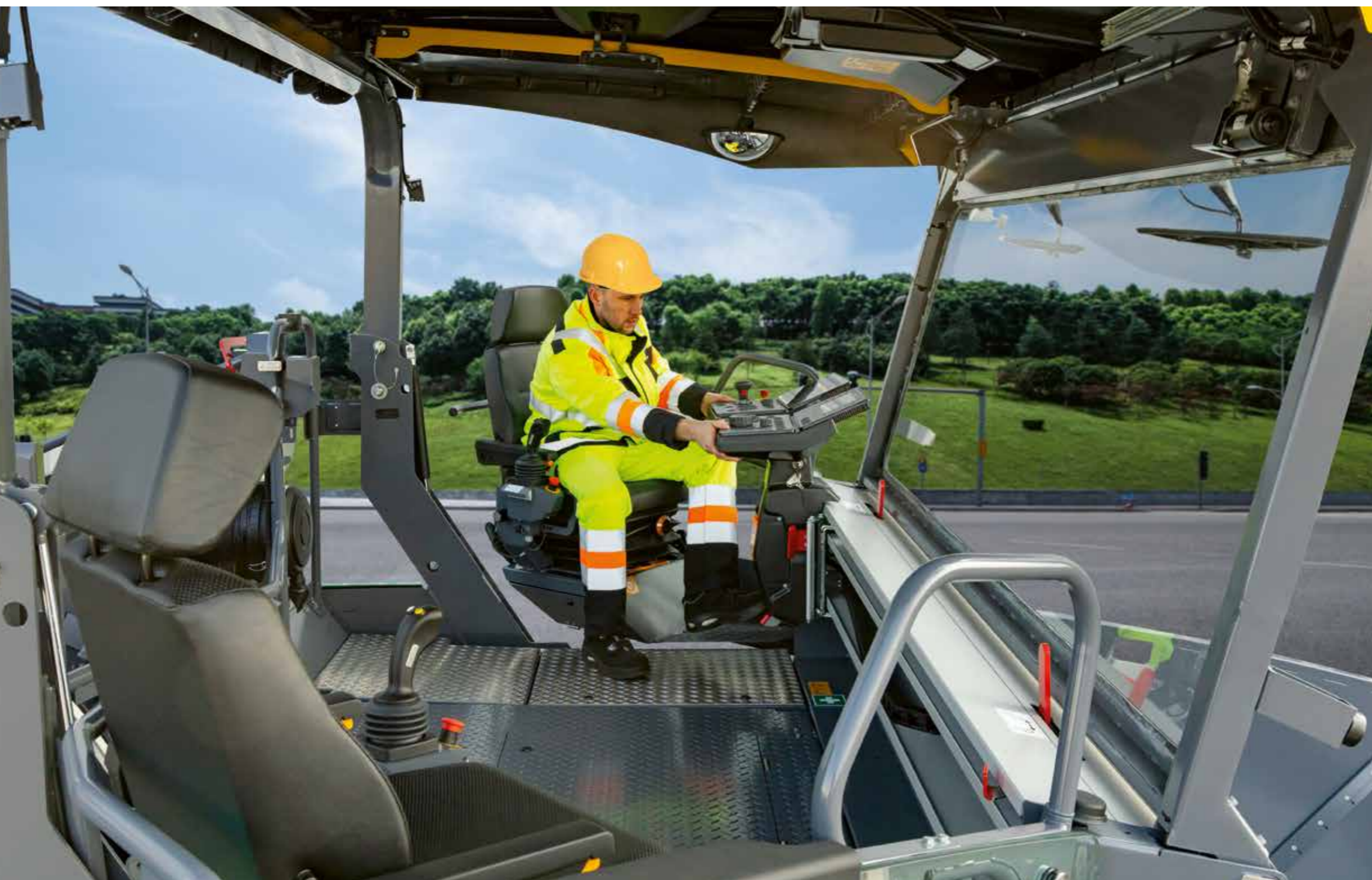
thanks to individual adjustment options

Convenient and more secure access

to the paver operator's platform

Hardtop

gives optimal protection from the weather



The comfortable ascent with handrail allows safe and convenient access to the spacious paver operator's platform.

An innovative machine with the latest technology also needs an advanced operating concept. This must be easy, intuitive to use and at the same time ergonomic. The operating concept ErgoPlus 5 puts the operator at the centre. Ensuring that he always has full control over the paver and the construction project. This starts with the ergonomic workstation on the operator's platform and extends to the intuitive and straightforward operation of the paver operator's console. The ErgoPlus 5 supports the operator, is self-explanatory and is easy to learn, as it builds on the tried and tested ErgoPlus 3 system.

Compared to its predecessor, the ErgoPlus 5 offers even greater ease of use and improved ergonomics. For example, the low profile paver operator's console allows for more legroom and a more comfortable seating position.



01



02



03



04



05



06

OPERATOR'S ERGOPLUS 5 PLATFORM

Improved efficiency, reliability and convenience

The ErgoPlus 5 operating concept allows the majority of applications to be performed by just one operator. The operator can conveniently view the complete process - from the supply of mix to its transfer to the paver hopper. VÖGELE also provides a number of intelligent functions to make work much easier.

For example, automatic distance control ensures that paver and material feeder are always the perfect distance from one another. A second operator is not required except for complex material feed processes: the pivoting conveyor of the MT 3000-5 Offset can also be controlled by a second operator.

01 Control console can be moved and seats have an extra swivel joint for an optimum seated position

- > A few adjustments are all it takes for the feeder operator to set up the position of his console to suit his way of working. It can be moved across the full width of the operator's platform, swivelled out to the sides and tilted. This allows an ergonomically optimized workplace to be set up in no time at all.
- > The comfortable, user-friendly Ergonomic Plus operator's seat has pivot-mounted seat heating and can be pivoted through $\pm 20^\circ$, whilst seat height and backrest angle can also be adjusted.

02 Hardtop made of glass fibre reinforced polymer material

- > The modern hardtop made of glass fibre-reinforced polymer material shelters the operator, come rain or shine. Wide, smoothly extending sunshades even shield the operator when his seat is swung out.

03 Protection against vandalism

- > The paver operator's console can be protected by a shatterproof cover to protect it from vandalism.

04 Comfortable and safe ascent

- > The comfortable ascent with handrail allows safe and convenient access to the spacious, clear paver operator's platform.

05 Well-organised paver operator's platform

- > The paver operator's platform has a streamlined design, making it tidy and giving the operator a professional workstation.
- > Extra storage space under the seats provides additional space. The compartments are easy to access, whilst the paver operator's platform remains tidy.
- > Access to the key service points on the machine is very clear and extremely ergonomic.

06 Pivoting conveyor operated with pin-point accuracy

- > The pivoting conveyor of the MT 3000-5 Offset is controlled by a joystick in the armrest. The joystick is used for top-precision control when pivoting the conveyor to the left or right, when raising or lowering it as well as when selecting the conveying capacity. The Emergency Off button stops the material transfer process immediately should a problem occur.
- > For complex material feeding tasks involving the MT 3000-5 Offset, the pivoting conveyor can also be controlled by a second operator.

PERFECT VIEW OF ALL RELEVANT POINTS

Comfortable paver operator's platform

The convenient operator's platform has an unobstructed view of all the crucial areas of the feeder - such as the material feeder for mix, the steering guide and the belt discharge point. The arrangement of the pivot-mounted seats provides maximum all-round visibility. It allows the operators to conveniently monitor the mix supply from the feed lorries on the one hand and the discharge point from the conveyor on the other.

Integrated lighting

The LED lighting in the hardtop and the transverse arrangement of the control panel of the integrated LED lighting perfectly illuminate the paver operator's workstation and all the service points accessible from the platform.

Optional LED work lights also illuminate the discharge point of the conveyor belt - making working in the dark more convenient and safer.



01 The arrangement of the pivot-mounted seats provides maximum all-round visibility.

02 The LED lighting integrated in the hardtop perfectly illuminate the paver operator's workstation and all the service points accessible from the platform,

03 Optional LED work lights also illuminate the discharge point of the conveyor belt.



AUTOMATED PROCESSES WITH FEED ASSIST

Entering machine settings again is time-consuming and is always a potential source of mistakes. Feed Assist allows processes to be saved and called back up automatically at the touch of a button. This makes work more efficient and safer.

As on the VÖGELE pavers, Feed Assist provides two functional areas. However, these are adapted to the technology and to the requirements governing the use of material feeders.

Depending on the mode set, therefore, there are a total of three repositioning functions, each of which is executed just by pressing the "Execute" button.

The Work programs section contains stored programs; you can also store your own. All settings are saved and stored as a material handling program. This saves an enormous amount of time, greatly enhancing both safety and consistent paving quality. Simply press a button in AutoSet Plus to activate the default material handling programs for working with the MT 3000-5 Offset in a VÖGELE InLine Pave train or to reset to factory settings.



Automated processes with Feed Assist

01 Faster positioning

Feed Assist makes it quicker to position the material feeder. The touch of a button accordingly prepares the machine for the operating states "Working", "Positioning" or "Transport".

02 Compiling individual material handling programs

The operator can furthermore compile individual material handling programs. To do this, set parameters such as the output of conveyors and augers, conveyor belt heating and distance control can all be saved in AutoSet Plus and activated at any time.

VÖGELE > GOOD TO KNOW

Benefits of Feed Assist:

- > Save time by making automatic settings to the PowerFeeder when starting work or switching job site
- > Simple to save and call up all relevant parameters
- > Consistently high quality and process reliability
- > The PowerFeeder travels rapidly and safely between sections of the job site



MAXIMUM EFFICIENCY MEETS MINIMAL CONSUMPTION

Powerful drive - precisely executed

The VÖGELE Powerpack delivers powerful engine performance at minimal consumption. State-of-the-art cooling and hydraulic systems ensure efficiency and durability, whilst the high-quality separate hydraulic drives and robust crawler tracks provide reliable traction in all conditions.

The driving force behind the VÖGELE Powerpack is its high-performance Deutz diesel engine. The liquid-cooled 6-cylinder in-line engine is tuned to a perfect degree of efficiency for the overall system and thus ensures minimum expenditure on fuel and overall operation. With its exhaust emissions after-treatment, the engine meets the requirements of EU Stage V. A version without exhaust emissions after-treatment is available for less regulated markets.

Optimum cooling

A large cooler assembly ensures that the power unit always delivers its full output.

The temperatures of the diesel engine, charge air, fuel and hydraulic oil are constantly maintained within the optimum range, a factor which contributes significantly to the durability of the diesel engine and the hydraulic oil. Another benefit is that the machine can be operated without difficulty in any climate in the world.

Powerful three-phase A.C. generator

The machine is equipped with an electrical package for the supply of power. This contains a 230 V socket, heating rods for the belt scraper and two connections for lighting balloons. A powerful three-phase A.C. generator supplies the electrical energy required.

160 kW at 2,000 rpm
is the diesel engine output

ECO mode at 1,800 rpm
reduces operating costs

450-litre
capacity fuel tank



The hydraulic systems for the drive, material conveyance and material handling operate in separate, closed circuits - ensuring maximum efficiency and optimum performance. The long crawler tracks with a wide footprint ensures excellent traction and consistent forward movement - even in demanding operating conditions.

The electronically controlled separate drives ensure smooth, consistent moving straight - even with varying pavement thicknesses or uneven sub-base. Robust strike-off plate reliably clear loose material and small obstacles from the track - ensuring trouble-free operation and reduced wear.



VÖGELE > GOOD TO KNOW

Exhaust emissions after-treatment and alternative fuels (HVO) and managed cooler assembly

On engines of exhaust emission Stage V, exhaust emissions after-treatment is provided by the diesel oxidation catalyst (DOC), a diesel particulate filter (DPF) and a selective catalytic reduction (SCR) catalytic converter. The MT 3000-5 has furthermore been approved for use with alternative fuels such as HVO*.

The MT 3000-5 also has a media-managed cooler assembly. It adapts its output to suit the temperature of charge air, fuel and coolant, thus reducing noise emissions by up to 5 dB.

*Hydrogenated Vegetable Oils

EASY TRANSPORT

On site in no time.
Ready for operation straight away.

Fast and cost-effective transport of machinery is crucial, particularly on sites where operations change frequently. That is why the Dash 5 generation of the VÖGELE PowerFeeder has been designed to impress not only in action, but also on the way there - with well-thought-out features that save time and money.

Transporting a material feeder is a cost factor that should not be underestimated. The VÖGELE PowerFeeder models of the Dash 5 generation have been designed from the ground up for optimal transport, a factor that has a positive impact on costs.

The narrow external track width of just 2.68 m and the large approach angle of 15° make it easier to load them onto standard low-bed trailer. The material hopper can be put down right at the front on the so-called goose neck of the low-bed trailer, With the result that even the MT 3000-5 Offset complies with maximum transport length.

The well-thought-out design is also evident during setup: Thanks to automated functions and a few simple steps, the PowerFeeder can be switched to working mode in no time at all - without any time-consuming preparation. This reduces downtime and ensures that the PowerFeeder is quickly where it's needed: in action.



3,100 mm
TRANSPORT HEIGHT

15 °
**COLLISION
ANGLE**

2,680 mm
OUTER TRACK WIDTH

SERVICE-FRIENDLY MACHINE CONCEPT

The standardized service concept conceived for the VÖGELE PowerFeeder means that maintenance is quick and uncomplicated. Large hinged panels provide convenient access to all service points on the machine.

- > The transfer hopper of the MT 3000-5 Offset is designed with a hinge, and in combination with an extra footstep, allows asphalt residues to be removed conveniently and without any risk at all.
- > Both the MT 3000-5 Standard and the MT 3000-5 Offset can be cleaned in the operating position.
- > The drive module, including valves and piping, are clearly arranged.



01



02

01 Easy access to service points
02 Folding transfer funnel



PowerFeeder MT 3000-5 Offset: Automatic cleaning system

To prevent material build-up, the new PowerFeeder MT 3000-5 Offset is equipped with an automatic cleaning system. With the machine running, spray nozzles can be used to clean the following items: the sides and back of the material hopper, the bottom of the material hopper, the hopper front and the augers. The transfer and discharge hoppers are also sprayed with cleaning emulsion. The settings for this are selected in the operating menu.



WIRTGEN GROUP CUSTOMER SUPPORT

Service you can rely on.

You can have confidence in reliable, swift support from us during the entire life cycle of your machine. Our wide range of services is ready with the right solution to every challenge you face.



Service

We keep our service promise with swift, straightforward assistance - on the job site or at our professional workshops. Our service team is trained to a professional standard and dedicated tools ensure that repair, care and maintenance tasks are completed quickly. We can support you with customised service agreements on request.

> www.wirtgen-group.com/service



Spare Parts

WIRTGEN GROUP original parts and accessories assure the long-term reliability and availability of your machines. Our experts will also be pleased to advise you about optimised wear part solutions to suit your application. Our parts are available all over the world at all times and are easy to order.

> parts.wirtgen-group.com



Training

The WIRTGEN GROUP brands are specialists in their field with decades of experience in applications; our customers benefit from this expertise. In our WIRTGEN GROUP training courses, we are delighted to pass our knowledge on to you, customised to suit both operators and servicing staff.

> www.wirtgen-group.com/training



Telematics solutions

Construction machines with leading technology and perfected telematics solutions work hand-in-hand in the WIRTGEN GROUP. The Operations Center* - the digital platform for process, machine and service optimisation - enables you to not only simplify maintenance planning for your machines, but also to increase your productivity and cost-effectiveness.

> www.wirtgen-group.com/telematics

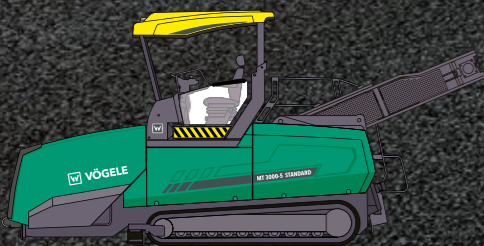
*The John Deere Operations Center™ (formerly WITOS) is currently not available in all countries. Please consult your responsible subsidiary or dealer if you have any questions.

ALL THE FACTS AT A GLANCE

MT 3000-5 Standard & Offset PowerFeeder



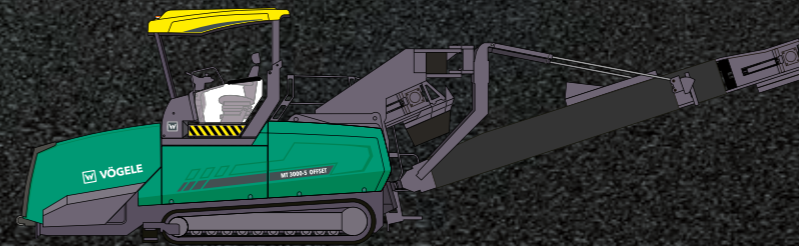
TECHNICAL DATA



MT 3000-5 STANDARD

- > Maximum conveying capacity 1,200 t/h
- > Transport length 8,950 mm
- > Weight 19,765 kg

TECHNICAL DATA



MT 3000-5 OFFSET

- > Maximum conveying capacity 1,200 t/h
- > Transport length 14,490 mm
- > Weight 24,285 kg



JOSEPH VÖGELE AG

Joseph-Vögele-Str. 1
67075 Ludwigshafen
Germany

T: +49 621 8105-0

F: +49 621 8105-461

M: marketing@voegele.info

 www.voegele.info



For more information, scan the QR code.