

A WIRTGEN GROUP COMPANY



KLEEMANN



MC 120(i) PRO

MOBICAT MOBILE JAW CRUSHER



MOBICAT MC 120(i) PRO

A guarantee for high production output: MOBICAT MC 120(i) PRO mobile jaw crusher excels with its extremely robust design and low-maintenance operation.

The plant has a generously dimensioned feeding unit, enabling large quantities of material to be easily fed in with an excavator or wheel loader. Thanks to its powerful crushing unit, the MC 120(i) PRO ensures the highest possible crushing capacity and high throughput combined with top reliability.



Performance in the foreground



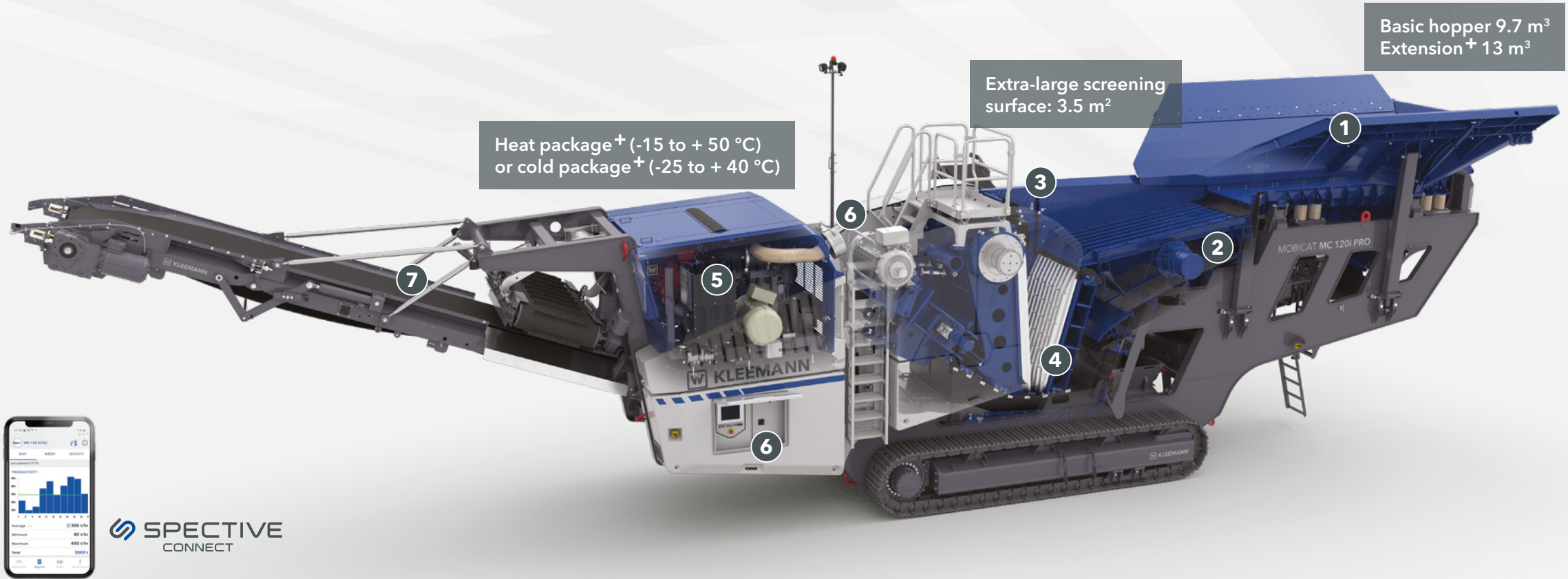
Operability at its easiest



Accessibility at a glance



MOBICAT MC 120(i) PRO



Basic hopper 9.7 m³
Extension⁺ 13 m³

Extra-large screening
surface: 3.5 m²

Heat package⁺ (-15 to + 50 °C)
or cold package⁺ (-25 to + 40 °C)



SPECTIVE
CONNECT

1 Feeding unit

4 Crusher unit

7 Crusher discharge conveyor and magnet⁺

2 Prescreening

5 Drive

> Handling and sustainability

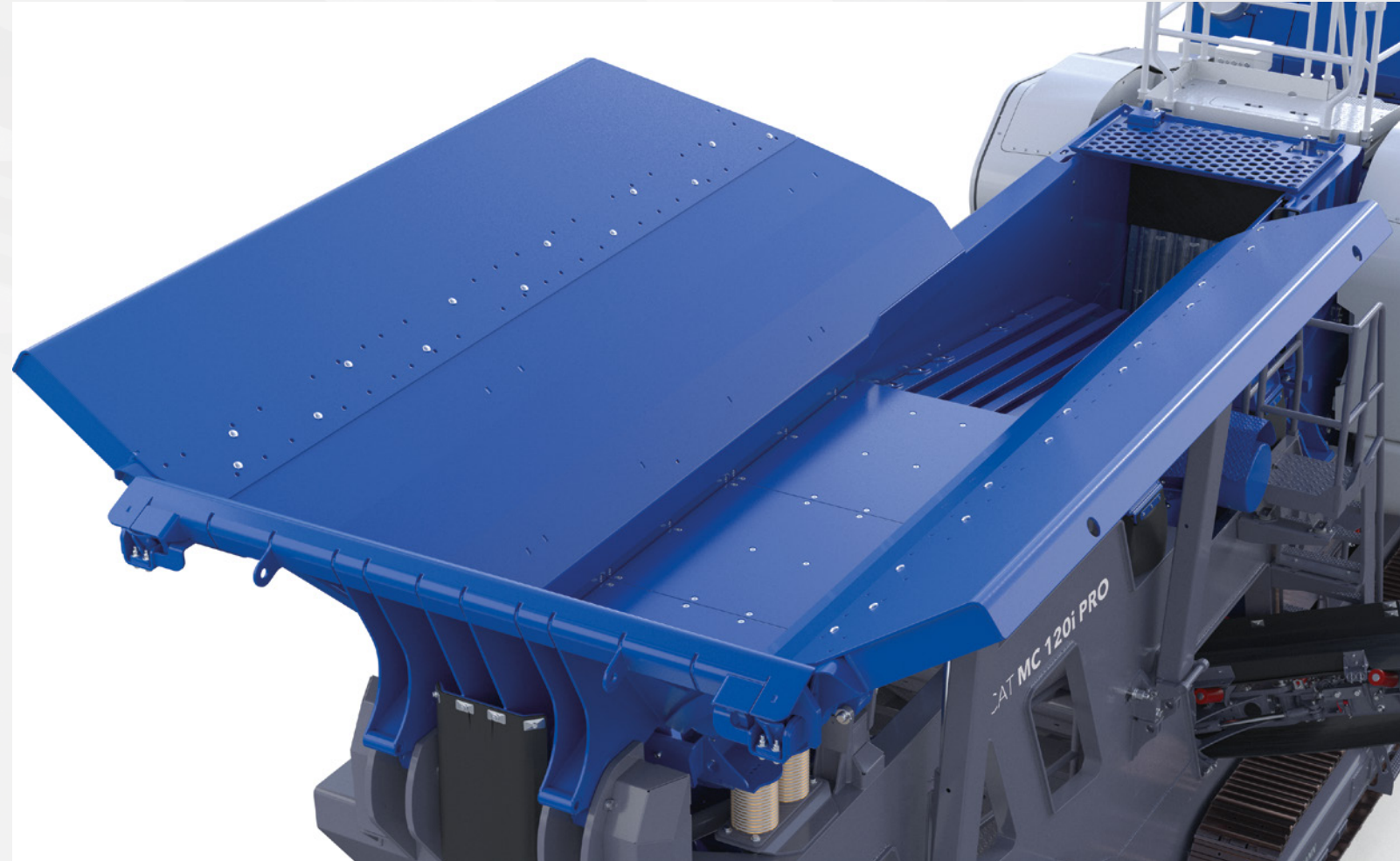
3 Continuous Feed System CFS

6 Operating concept



1 Feeding unit

- > Generously dimensioned basic hopper for simple and fast loading
- > Can be folded hydraulically; self-locking without any additional work - for fast and safe start-up
- > Hopper extension⁺ enables the hopper to be loaded from the side and rear for quick load cycles



1 Feeding unit

2 Prescreening

3 Continuous Feed System CFS

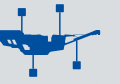
4 Crusher unit

5 Drive

6 Operating concept

7 Crusher discharge conveyor and magnet⁺

> Handling and sustainability



2 Prescreening

- > Independent vibrating double-deck prescreen ensures effective screening of the fines while increasing output
- > Easily adjustable bypass flap for optional lateral discharge of the fine grain or diversion into the crusher bypass
- > Side discharge conveyor⁺ can be used on both sides, rigid or folded hydraulically



1 Feeding unit

2 Prescreening

3 Continuous Feed System CFS

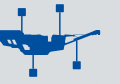
4 Crusher unit

5 Drive

6 Operating concept

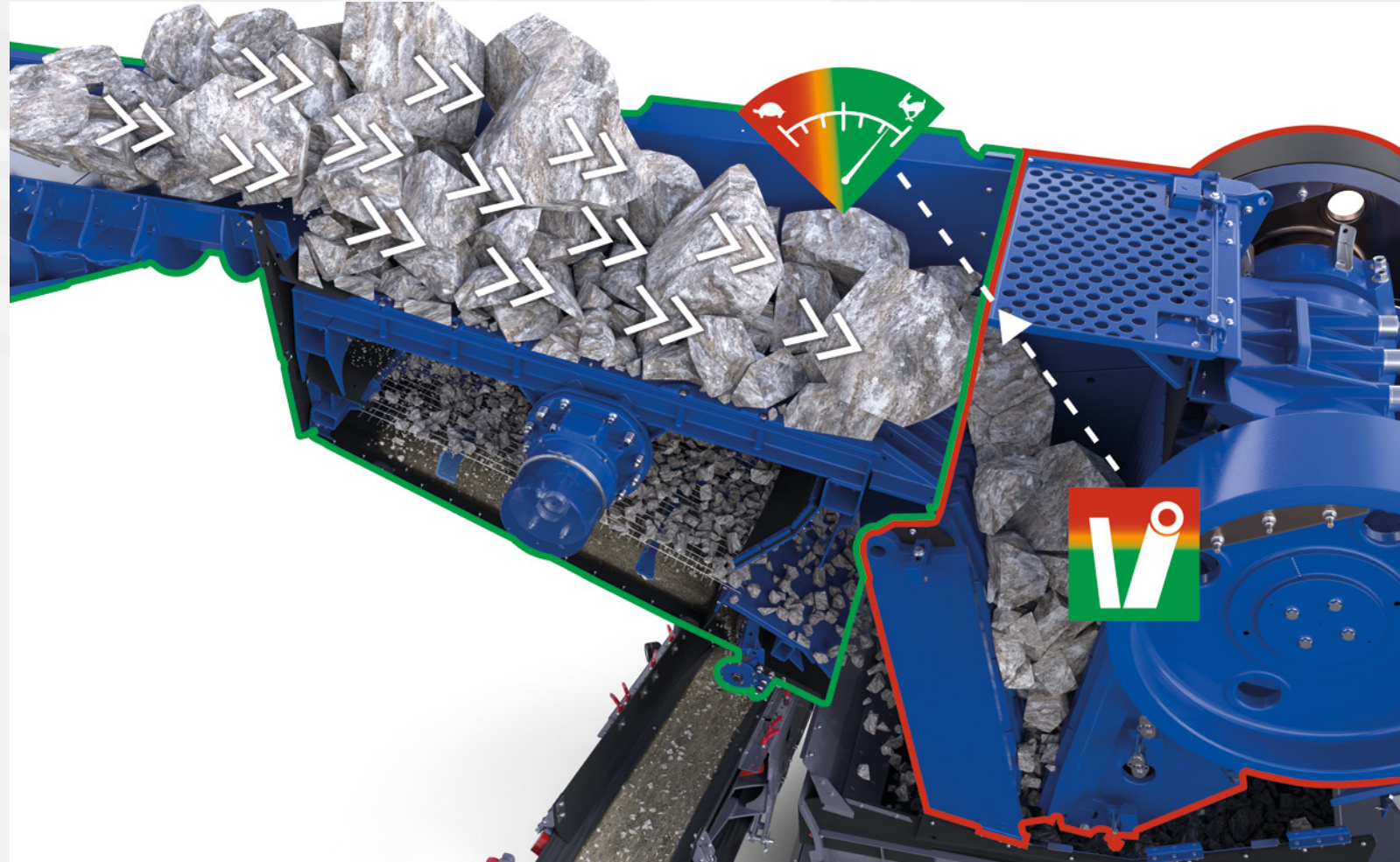
7 Crusher discharge conveyor and magnet⁺

> Handling and sustainability



3 Continuous Feed System CFS

- > Innovative feed control ensures continuous crusher utilisation
- > Vibrating feeder and prescreen automatically restrict or increase the conveying speed depending on the fill level of the crusher. This results in optimal crusher utilisation.



1 Feeding unit

2 Prescreening

3 Continuous Feed System CFS

4 Crusher unit

5 Drive

6 Operating concept

7 Crusher discharge conveyor and magnet⁺

> Handling and sustainability



4 Crusher unit

- > Convenient gap setting: at the press of a button over the entire setting range
- > Optimised crusher geometry with long crusher jaw: high throughput combined with top reliability
- > Power crusher drive: Powerful 200 kW electric drive for maximum crushing capacity
- > Crusher unblocking system⁺: for loosening packed material - enables powerful starting even if the crusher is full and at a standstill
- > Gentle material transfer: thanks to deflector plate or vibrating extractor⁺
- > Rock chisel⁺: for removing material that is stuck, or for crushing lumps of stone

Overload system

LRS load reduction system prevents consequential damage during long operation under extremely high forces

- > The feed volume is adapted and the forces acting on the housing and rocker are reduced
- > When the overload is reduced, the system adapts to the highest possible output



1 Feeding unit

2 Prescreening

3 Continuous Feed System CFS

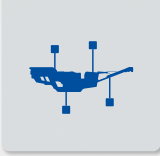
4 Crusher unit

5 Drive

6 Operating concept

7 Crusher discharge conveyor and magnet⁺

> Handling and sustainability

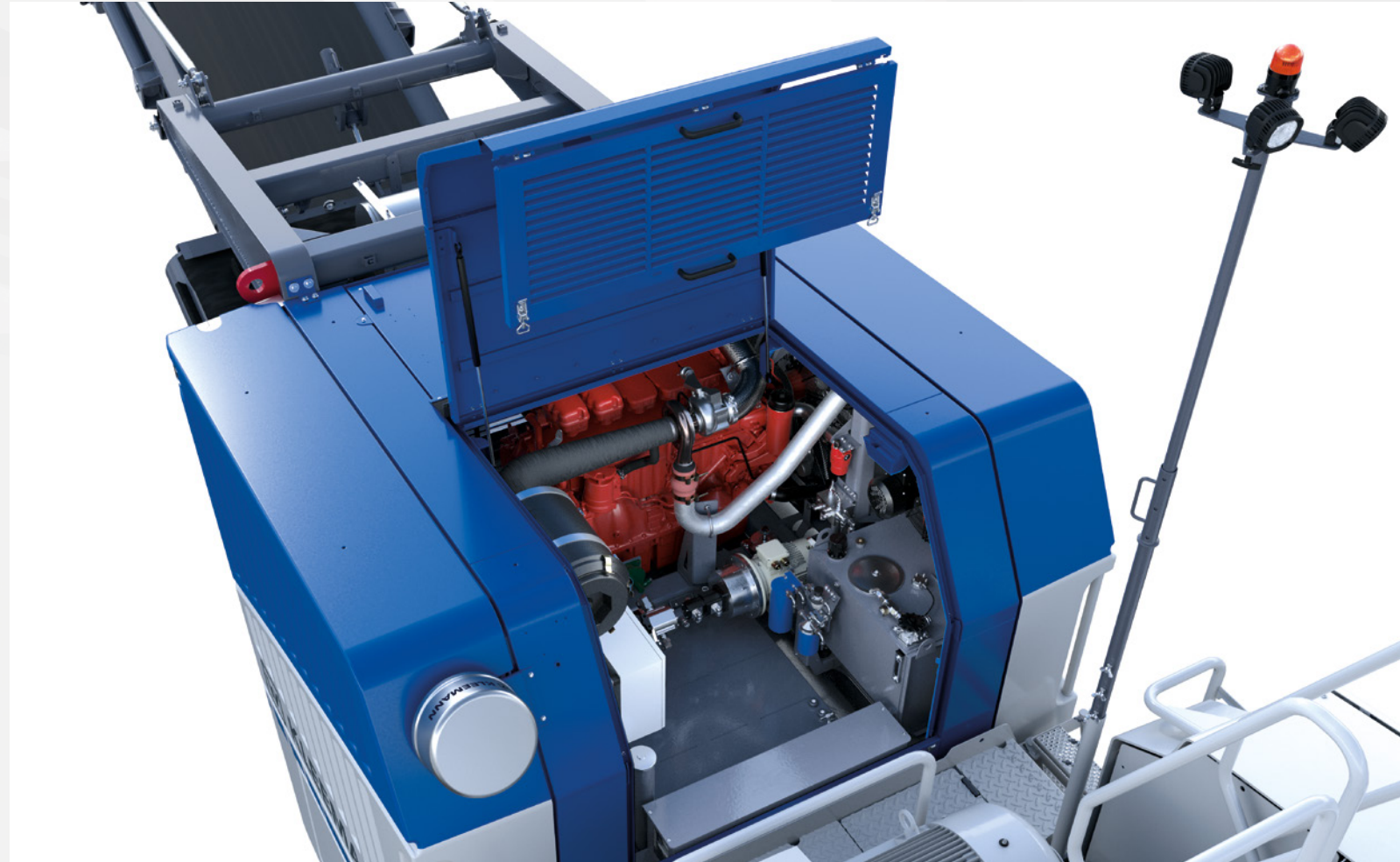


5 Drive

- > With the E-DRIVE diesel-electric drive concept, all drives are electric with the exception of the transmission and auxiliary functions
- > Local emission-free operation possible through an external power supply (transportable, depending on the country) for increased sustainability
- > Electrical connection ⁺ for the supply of other downstream machines such as a screening plant or stacker
- > Raised air intake ⁺ for longer filter service life



KLEEMANN SUSTAINABILITY describes innovative technologies and solutions which are consistent with the sustainability objectives of the WIRTGEN GROUP.



1 Feeding unit

2 Prescreening

3 Continuous Feed System CFS

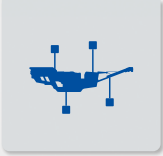
4 Crusher unit

5 Drive

6 Operating concept

7 Crusher discharge conveyor and magnet ⁺

> Handling and sustainability



6 Operating concept SPECTIVE

- > **Touch panel:** with menu-guided operation, visualisation and support; status display of all components such as speed, temperature, etc., rapid fault localisation and diagnostics
- > **SPECTIVE CONNECT +:** displays all important information directly on the smartphone
- > **Camera system +:** enables convenient monitoring of crusher and hopper, remote monitor in the excavator, additional connection to SPECTIVE CONNECT
- > **WITOS FleetView telematics system:** efficient fleet and service management with information on the operating status of the machines independently of location and time - alternatively, with integration in SPECTIVE CONNECT
- > **Line coupling +:** Process coupling for controlling the production output; safety coupling for reliable linking of the plants in the plant train
- > **Belt scale +:** at the crusher discharge conveyor for determining the production data



1 Feeding unit

2 Prescreening

3 Continuous Feed System CFS

4 Crusher unit

5 Drive

6 Operating concept


7 Crusher discharge conveyor and magnet +

> Handling and sustainability



> Crusher discharge conveyor and magnet⁺

Crusher discharge conveyor

- > Wide, robust crusher discharge conveyor, discharge height 4 m
- > Extended conveyor⁺ with a discharge height of 4.6 m, can be hydraulically folded
-  Complete conveyor housing⁺ for dust reduction - can remain on the conveyor for folding

Magnetic separator

- > Electromagnet or permanent magnet⁺
- > Can be raised and lowered hydraulically via remote control



1 Feeding unit

2 Prescreening

3 Continuous Feed System CFS

4 Crusher unit

5 Drive

6 Operating concept

> Crusher discharge conveyor and magnet⁺

> Handling and sustainability



> Safety & ergonomics

- > Easy physical and visual access to all components enables fast and convenient servicing
- > All hydraulic cylinders are equipped with safety valves (lowering/brake holding valves); each cylinder remains in its current position in the event of shutdown or malfunctioning
- > Simple refuelling from the ground through refuelling pump⁺
- > LED lighting included in basic plant; Premium lighting⁺ for extended illumination of work areas

> Transport

- > Can be quickly switched to the transport position
- > Weight reduction via removal of plant components, e.g. chute and prescreen
- > The foldable side discharge conveyor⁺ and rock chisel⁺ can remain on the machine for transport



> Environment

- > Thanks to the electric drive, hydraulic oil is only required for setting and set-up functions, which reduces the environmental impact and maintenance costs
- > Effective dust reduction thanks to water spray systems at the crusher inlet and crusher discharge conveyor, reduction of dust volume of up to 50% (depending on material)



1 Feeding unit

2 Prescreening

3 Continuous Feed System CFS

4 Crusher unit

5 Drive

6 Operating concept

7 Crusher discharge conveyor and magnet⁺

> Handling and sustainability

TECHNICAL INFORMATION	MC 120(i) PRO
Feed capacity up to approx. (t/h)	650
Crusher inlet width x depth (mm)	1,200 x 800
Max. feed size (mm)	1,080 x 680 x 410
Transport height approx. (mm) *	4,100
Transport length approx. (mm) *	19.355
Transport width approx. (mm) *	3,000
Transport weight of basic plant - max. configuration (kg)	72,500 - 86,500
* without options	



KLEEMANN GmbH

Manfred-Wörner-Str. 160
73037 Göppingen
Germany

T: +49 7161 206-0
M: info@kleemann.info

 www.kleemann.info