

KLEEMANN range of **SCREENS**

CLOSE TO OUR CUSTOMERS

KLEEMANN GmbH

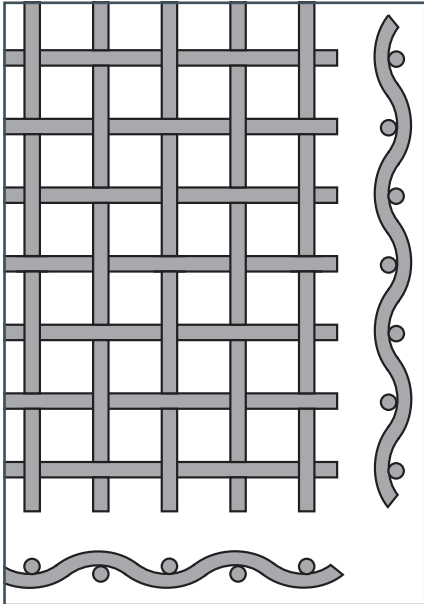
Manfred-Wörner-Str. 160 · 73037 Göppingen · Germany

T: +49 71 61 / 206 0 · F: +49 71 61 / 206 100

customersupport@kleemann.info

KLEEMANN screens

YOUR SOLUTION WHEN SCREENING



SCREEN CLOTH TYPE:

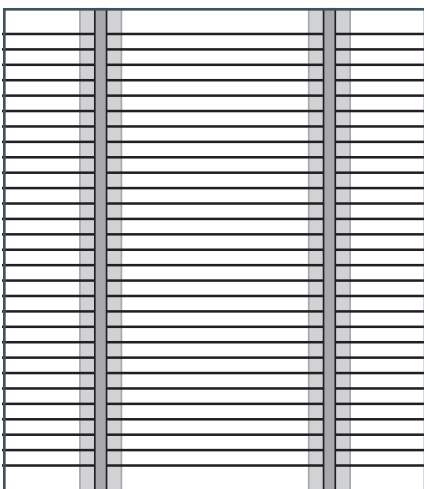
Square mesh wire cloth made from spring steel wires

Square mesh wire cloths are manufactured from wear-resistant and vibration-proof spring steel wires.

Thanks to particular weaving measures during the manufacture of vibrating cloths, the benefit of the heavy impact of the round wires is achieved at the intersection points, and a fixed wire layer and uniform mesh width are also achieved.

BENEFITS

- > Suitable for all screening plants
- > High elasticity against strong vibrations
- > High screening capacity thanks to large open screen surface
- > Wire layer remains almost the same up until it has worn down completely



SCREEN CLOTH TYPE:

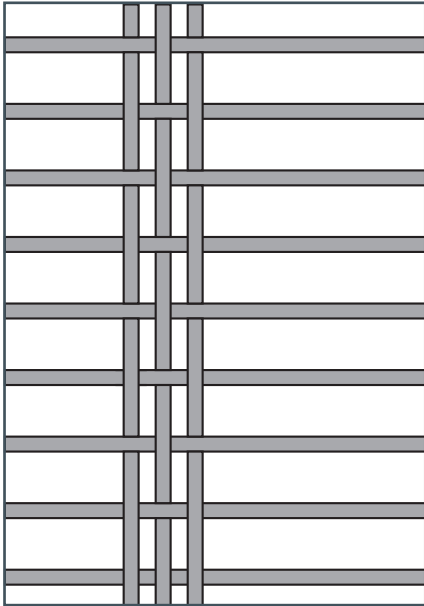
G-Harp/Piano Wire

G-Harps consist of smooth, gap-forming longitudinal wires with flexible and adjustable cross members.

BENEFITS

- > Suitable for all screening plants (stretched lengthways)
- > For moist and muddy materials
- > Simple installation of flexible cross members
- > Smooth screen surface, high stability, long service life





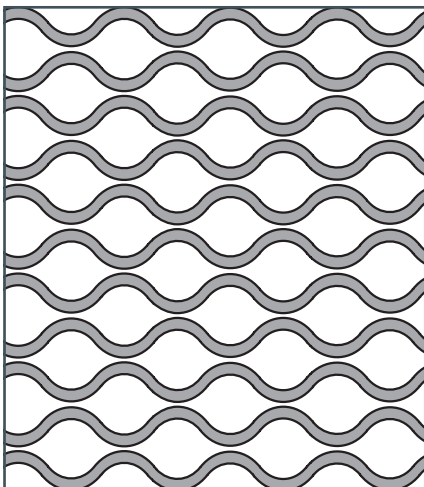
SCREEN CLOTH TYPE: W-Harp/Long Slot

W-Harps consist of crimped, round longitudinal wires which run perpendicular to the screening level with cross wire layers interwoven at certain distances. The mesh width between two longitudinal wires is the gap width.

The distances between the cross wire layers are generally 60-150 mm, but can be smaller or larger or different in the individual sieve floor.

BENEFITS

- > Suitable for all screening plants
- > Good self-cleaning effect
- > Prevents screening material sticking by natural vibrations of longitudinal wires



SCREEN CLOTH TYPE: S-Harp/Diamond Flex*

S-Harps have square screen openings. The flexible freedom of movement of the individual longitudinal wires allows natural vibrations which make the sieve floor "elastic" so that feed material which is difficult to screen can be processed.

BENEFITS

- > Suitable for all screening plants
- > Good self-cleaning effect
- > Counteracts clogging
- > Ensures clear-cut grain size separation

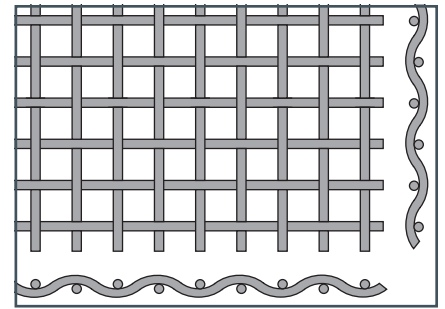
FACTORS TO BE CONSIDERED WHEN CHOOSING THE PROPER SCREEN:

- > Material type: Natural stone or recycling
- > Grain shape: cubic or oblong
- > Desired final grain size: Determine screen cloth sizes of the screen decks
- > Moisture content: With moist feed material encrustations must be avoided
- > Sieve inclination: The steeper the sieve inclination, the bigger the sieve opening in proportion to the desired separation cut has to be
- > Ratio between upper deck and lower deck: For thorough classification and efficient and low-wear application, the ratio must not be higher than 4:1

* Only upon request

WIRE MESHES

for prescreening units



WIRE MESHES FOR PRESCREENING UNITS						
Machine type	Model	Series range	Screen*			
			Average mesh size (mm)	Wire Ø (mm)	Quantity	Part No.
MC 100 R(i) EVO	K002, K011	0002 - 9999	10	4	1	2291445
			12	4	1	2339205
			15	4	1	2339206
			18	4	1	2339207
			20	5	1	2339208
			25	6	1	2291447
			30	8	1	2339209
			35	8	1	2291449
			40	8	1	2339210
			45	8	1	2339211
			50	10	1	2339212
			55	10	1	2339213
MC 110 R, MR 110 REVO	K003, K016	0001 - 9999	15	4	1	2232158
			18	4	1	2232159
			20	6	1	2220614
			25	6	1	M20000541
			30	6	1	2224928
			35	8	1	M20000543
			40	8	1	2232160
			45	8	1	2329434
			50	10	1	2329435

*Other sizes and mesh types are available on request.

WIRE MESHES FOR PRESCREENING UNITS						
Machine type	Model	Series range	Screen*			
			Average mesh size (mm)	Wire Ø (mm)	Quantity	Part No.
MC 110 Z	K004	0001 - 9999	10	4	1	M20001709
			15	4	1	M20001344
			18	4	1	M20001398
			20	5	1	M20001376
			22	6	1	2410151
			25	6	1	M20000800
			28	6	1	2217706
			30	8	1	M20001522
			32	8	1	M20000632
			35	8	1	M20000315
			40	8	1	M20000373
			45	8	1	M20000393
			50	10	1	2234812
MC 110 Z(i) EVO, MC 110 R(i) EVO	K006, K015, K005, K014	0001 - 9999	10	4	1	2298547
			12	4	1	2298549
			15	4	1	2298550
			18	4	1	2298551
			20	5	1	2298552
			22	6	1	2617143
			25	6	1	2298554
			30	8	1	2298555
			35	8	1	2298556
			40	8	1	2298557
			45	8	1	2298558
			50	10	1	2298559
			55	10	1	2298560
60	10	1	2607436			

*Other sizes and mesh types are available on request.

WIRE MESHES FOR PRESCREENING UNITS

Machine type	Model	Series range	Screen*			
			Average mesh size (mm)	Wire Ø (mm)	Quantity	Part No.
MC 120 Z, MR 122 Z, MR 130 Z, MR 130 Z EVO	K007, K062, K024, K024	0001 - 9999, 0001 - 9999, 0001 - 0299, 0301 - 9999	8	4	1	M20000952
			10	4	1	M10010237
			12	4	1	2234790
			15	4	1	M10013885
			16	4	1	M10007592
			18	4	1	M10007005
			20	5	1	M10007905
			22	6	1	M10005821
			25	6	1	M10010004
			28	6.3	1	M10009743
			30	8	1	M20000033
			32	8	1	M10008122
			35	8	1	M10004739
			40	8	1	M10004738
			45	8	1	M10006092
			50	10	1	M10012445
			55	10	1	M10016328
60	10	1	M20000339			
65	10	1	M20000040			
MC 120 Z PRO, MC 120 Zi PRO	K034, K035	0001 - 0006, 0001 - 0001	20	8	2	2581129
			25	8	2	2581128
			30	10	2	2581127
			35	10	2	2581126
			40	12.5	2	2581125
			45	12.5	2	2581124
			50	12.2	2	2581122
	K034, K035	0007 - 9999, 0002 - 9999	20	8	2	2601987
			25	8	2	2601985
			30	10	2	2601983
			35	10	2	2601982
			40	12.5	2	2601976
			45	12.5	2	2601959
			50	12.2	2	2601957
MR 110 Z EVO	K017	0002 - 9999	10	4	1	M20001709
			15	4	1	M20001344
			18	4	1	M20001398
			20	5	1	M20001376
			22	6	1	2410151
			25	6	1	M20000800
			28	6	1	2217706
			30	8	1	M20001522
			32	8	1	M20000632
			35	8	1	M20000315
			40	8	1	M20000373
			45	8	1	M20000393
			50	10	1	2234812
			55	8	1	M20001548

*Other sizes and mesh types are available on request.

WIRE MESHES FOR PRESCREENING UNITS						
Machine type	Model	Series range	Screen*			
			Average mesh size (mm)	Wire Ø (mm)	Quantity	Part No.
MR 110 Z(i) EVO2	K018, K019	0001 - 9999	10	4	1	2335436
			12	4	1	2335438
			15	4	1	2335441
			20	5	1	2335444
			25	6	1	2335446
			30	7	1	2335448
			32	8	1	2335450
			35	8	1	2335453
			40	8	1	2335455
			45	8	1	2335457
			50	8	1	2335459
			55	8	1	2335461
MR 130 Z(i) EVO2	K077, K078	0001 - 9999	6.5	2	1	2601415
			10	4	1	2341115
			12	4	1	2298433
			15	4	1	2341117
			18	6	1	2341118
			20	6	1	2341119
			22	5	1	2642432
			25	6	1	2298429
			30	8	1	2341120
			35	8	1	2298424
			40	8	1	2341122
			45	8	1	2341123
			50	10	1	2341124
			55	10	1	2341126



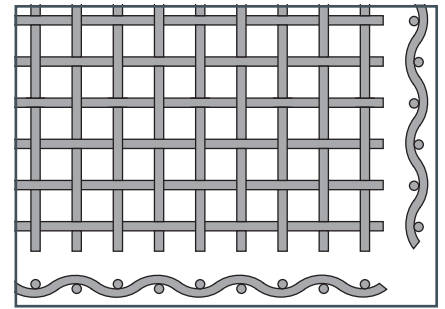
DETERMINE OPTIMAL TENSION:

- Tension screen
- Drop an object weighing 2-3 kg onto the surface:
The tension is correct if the object bounces up.
If the object stays on the screen surface, the tension is too low.

*Other sizes and mesh types are available on request.

WIRE MESHES

for secondary screening units



WIRE MESHES FOR SECONDARY SCREENING UNITS								
Machine type	Model	Series range	Screen*					
			Average mesh size (mm)	Wire Ø (mm)	Screen section, large		Screen section, small	
					Quantity	Part No.	Quantity	Part No.
MC 110 Z, MR 100 Z	K004, K013	0001 - 9999	18	4	2	2194538		
			22	5	2	M10017783		
			25	6	2	M10021718		
			28	7	2	M20001153		
			30	8	2	2234804		
			35	8	2	M20000147		
			40	8	2	M20000377		
			45	8	2	M10017736		
			50	10	2	M20000799		
			55	10	2	M20000666		
			60	10	2	M20000273		
			65	10	2	M20000148		
			70	10	2	2607304		
			80	10	2	M20000898		
90	10	2	2432813					
MR 110 Z EVO, MR 110 Z EVO2, MR 110 Zi EVO2, MCO 9 S EVO, MCO 9 Si EVO	K017, K018, K019, K074, K075	0002 - 9999, 0001 - 9999, 0001 - 9999, 0001 - 9999	8	3	4	2632145	1	2632147
			10	4	4	2234836	1	2234837
			12	4	4	M20001524	1	M20001523
			15	4	4	M20001533	1	M20001534
			16	4	4	2220306	1	2220305
			18	5	4	2395288	1	2395289
			20	5	4	2234861	1	2234862
			22	6	4	2292815	1	2292816
			25	6	4	M20001411	1	M20001410
			28	6	4	M20001532	1	M20001531
			30	8	4	2234867	1	2234871
			32	6	4	2292821	1	2292822
			35	8	4	2234878	1	2234880
			40	8	4	M20001405	1	M20001404
			45	8	4	M20001640	1	M20001639
			50	10	4	M20001370	1	M20001369
			55	10	4	M20001571	1	M20001579
			60	10	4	M20001716	1	M20001715
			65	10	4	M20001529	1	M20001530
			70	10	4	M20001678	1	M20001679
80	10	4	2202449	1	2202450			
90	10	4	2200097	1	2200098			

*Other sizes and mesh types are available on request.

WIRE MESHES FOR SECONDARY SCREENING UNITS								
Machine type	Model	Series range	Screen*					
			Average mesh size (mm)	Wire Ø (mm)	Screen section, large		Screen section, small	
					Quantity	Part No.	Quantity	Part No.
MR 130 Z	K024	0001 - 0299	16	4	2	M10020584		
			20	6	2	M10016387		
			28	6	2	M20000089		
			30	6	2	M20000082		
			40	8	2	M10016477		
			50	10	2	M10017445		
			55	10	2	M10016650		
			60	10	2	M10016275		
MR 130 Z EVO, MR 130 Z(i) EVO2	K024, K077, K078	0301 - 9999, 0001 - 9999, 0001 - 9999	8	3	4	2348799	1	2348798
			10	4	4	2208580	1	2208582
			12	4	4	2234822	1	2234825
			15	4	4	2212424	1	2212430
			16	4	4	M10006857	1	M20001562
			18	4	4	2193517	1	2193527
			20	5	4	M10003491	1	M20001561
			22	5	4	M10004471	1	2215293
			25	6	4	M20001551	1	M20001552
			28	6	4	M20001713	1	M20001714
			30	7	4	2234476	1	2234480
			32	7	4	M20001749	1	M20001750
			35	8	4	M10003179	1	M20001254
			40	8	4	M10005149	1	M20000795
			45	8	4	M20001595	1	M20001596
			50	10	4	M20001298	1	M20001558
			55	10	4	M20001553	1	M20001554
			60	10	4	M20001555	1	M20001556
			65	10	4	M10010425	1	M20001560
70	10	4	M20001752	1	M20001753			
80	10	4	2202978	1	2202978			
90	10	4	2192479	1	2192481			



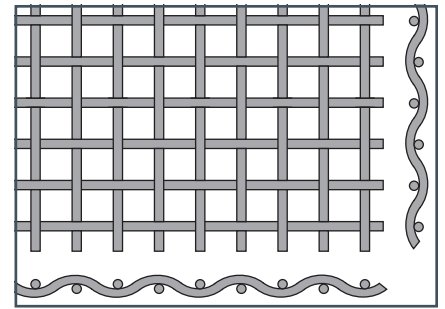
TIPS FOR EFFICIENT OPERATION OF SCREENING PLANT:

- > Selection of screens taking into account the factors for choosing the proper screen.
- > Sieve inclination: The steeper the sieve inclination, the bigger the screen mesh must be as the material falls faster and is on the screen deck for a shorter period. A lower sieve inclination is recommended for an accurate result.
- > Layer thickness: The speed of the feeding conveyor has an effect on the layer thickness. If the speed is too high, the layer thickness on the screen deck is higher. As coarse material is then mixed, the screening is more inexact and material which is too fine can end up in the oversize grain.

*Other sizes and mesh types are available on request.

WIRE MESHES

for MOBISCREEN models



WIRE MESHES FOR MOBISCREEN MODELS									
Machine type	Model	Series range	Deck	Screen*					
				Average mesh size (mm)	Wire Ø (mm)	Screen section, large		Screen section, small	
						Quantity	Part No.	Quantity	Part No.
MS 12 Z-AD	K067	0001 - 0222	Upper deck	20	4	1	2320717		
				25	5	1	2227232		
				30	6	1	2227279		
				40	8	1	2227283		
				45	8	1	2227285		
				50	10	1	2227287		
				60	10	1	2227299		
		0223 - 9999		80	10	1	2227308		
				40	8	2	2531585		
				50	10	2	2529893		
				55	10	2	2529894		
				60	10	2	2529895		
				65	10	2	2529896		
				70	10	2	2529897		
		0001 - 9999		75	10	2	2529898		
				80	10	2	2529899		
				90	10	2	2529900		
				100	10	2	2529901		
				8	3	1	2216654	1	2216655
				10	4	1	2227330	1	2227352
				12	4	1	2227335	1	2227354
Lower deck	20	4	1	2228359	1	2227361			
	25	5	1	2313339	1	2313343			
	30	6	1	2227339	1	2227363			
	40	8	1	2227341	1	2227367			
	50	8	1	2227342	1	2227368			

*Other sizes and mesh types are available on request.

WIRE MESHES FOR MOBISCREEN MODELS									
Machine type	Model	Series range	Deck	Screen*					
				Average mesh size (mm)	Wire Ø (mm)	Screen section, large		Screen section, small	
						Quantity	Part No.	Quantity	Part No.
MS 14 Z	K068	0001 - 9999	Upper deck	10	4	2	2227785	1	2227786
				12	4	2	2227768	1	2227787
				15	4	2	2227769	1	2227788
				18	5	2	2219139	1	2219140
				20	5	2	2227772	1	2227790
				25	5	2	2227774	1	2227793
				30	6	2	2296423	1	2291875
				40	8	2	M20001582	1	M20001610
				45	8	2	2227777	1	2227797
				50	8	2	M20001386	1	2223200
				55	8	2	M20001627	1	2227799
				60	8	2	2227778	1	2227800
				65	8	2	2227779	1	2227801
				70	10	2	M20001605	1	M20001604
				75	10	2	2227780	1	2227808
			80	10	2	2227781	1	2227809	
			90	10	2	2227783	1	2227810	
			Lower deck	8	3	1	2227634		
				10	4	1	2227636		
				12	4	1	2227638		
				15	4	1	2227639		
				20	4	1	M20001606		
				25	5	1	2227626		
				30	6	1	2227627		
				38	8	1	2227628		
				40	8	1	2227629		
				45	8	1	2227630		

*Other sizes and mesh types are available on request.

WIRE MESHES FOR MOBISCREEN MODELS

Machine type	Model	Series range	Deck	Screen*					
				Average mesh size (mm)	Wire Ø (mm)	Screen section, large		Screen section, small	
						Quantity	Part No.	Quantity	Part No.
MS 13 Z-AD	K066	0001 - 9999	Upper deck	10	4	3	2227785		
				12	4	3	2227768		
				15	4	3	2227769		
				18	5	3	2219139		
				20	5	3	2227772		
				25	5	3	2227774		
				30	6	3	2296423		
				32	6	3	2296425		
				35	8	3	2227776		
				40	8	3	M20001582		
				45	8	3	2227777		
				50	8	3	M20001386		
				55	8	3	M20001627		
				60	8	3	2227778		
				65	8	3	2227779		
				70	10	3	M20001605		
				75	10	3	2227780		
				80	10	3	2227781		
			90	10	3	2227783			
			Lower deck	7	3	2	2228390		
				8	3	2	2228391		
				10	3	2	2199248		
				20	5	2	M20001473		
				25	5	2	M20001603		
				30	6	2	2228395		
				40	8	2	M20001703		
				45	8	2	2235994		
				50	8	2	2228397		

*Other sizes and mesh types are available on request.

WIRE MESHES FOR MOBISCREEN MODELS												
Machine type	Model	Series range	Deck	Screen*								
				Average mesh size (mm)	Wire Ø (mm)	Screen section, large		Screen section, small				
						Quantity	Part No.	Quantity	Part No.			
MS 702(i) EVO, MS 703(i) EVO	K083, K084, K103, K104	0001 - 9999	Upper / middle deck	7	3	2	2447170	2	2448953			
				8	3	2	2447171	2	2348799			
				10	4	2	2428276	2	2208580			
				11	4	2	2447085	2	2199916			
				12	4	2	2354096	2	2234822			
				15	5	2	2447094	2	2448851			
				16	5	2	2447110	2	2448852			
				18	5	2	2447118	2	M10003800			
				20	5	2	2354095	2	M10003491			
				22	6.3	2	2491562	2	2491566			
				25	6	2	2428275	2	M20001551			
				28	6	2	2593549	2	M20001713			
				30	8	2	2447130	2	2234476			
				35	8	2	2354093	2	2448868			
				38	8	2	2639254	2	M10002485			
				40	8	2	2447134	2	M10005149			
				45	8	2	2354091	2	M20001595			
				50	10	2	2447141	2	M20001298			
				55	10	2	2447143	2	M20001553			
				60	10	2	2447147	2	M20001555			
			65	10	2	2447148	2	M10010425				
			70	10	2	2447150	2	M20001752				
			75	100	2	2354086	2	2448949				
			90	12	2	2447153	2	2448951				
			100	12	2	2447154	2	2448952				
						Lower deck	7	3	1	2453886	1	2447173
							8	3	1	2453889	1	2447186
							9	3	1	2453891	1	2447190
							10	4	1	2453892	1	2447196
							11	4	1	2453894	1	2447202
							12	4	1	2453898	1	2447208
							15	5	1	2453901	1	2447216
							20	5	1	2453902	1	2447222
							25	6	1	2453919	1	2447229
			30	8	1		2453927	1	2447231			
			35	8	1		2621531	1	2456089			
			38	8	1		2453928	1	2447233			
			40	8	1		2453931	1	2447234			
			50	10	1		2453933	1	2447236			

*Other sizes and mesh types are available on request.

WIRE MESHES FOR MOBISCREEN MODELS

Machine type	Model	Series range	Deck	Screen*								
				Average mesh size (mm)	Wire Ø (mm)	Screen section, large		Screen section, small				
						Quantity	Part No.	Quantity	Part No.			
MS 16 Z, MS 16 D	K048, K049	0001 - 9999	Upper / middle deck	10	3	3	M20001496	1	M20001494			
				12	4	3	M20000872	1	2195240			
				14	4	3	M20001027	1	2195335			
				15	4	3	M20001735	1	2195338			
				16	4	3	M20000833	1	2195342			
				18	4	3	M20001327	1	2195345			
				20	5	3	2234507	1	2234505			
				22	5	3	M20000690	1	M20000691			
				25	5	3	M20000958	1	M20001769			
				28	6	3	M20001629	1	2195355			
				30	8	3	2234516	1	2234515			
				35	8	3	M20001727	1	M20001726			
				40	8	3	M20000625	1	M20000626			
				45	8	3	M20000642	1	M20000643			
				50	10	3	M20000686	1	M20000687			
				55	10	3	M20000627	1	M20000628			
				60	10	3	M20001065	1	M20001066			
				65	10	3	M20000688	1	M20000689			
			70	10	3	M20001400	1	M20001399				
			80	10	3	2218851	1	2218853				
						Lower deck	5	2	2	M20001308		
							8	3	2	M20000761		
							10	4	2	2234498		
							12	4	2	2234501		
							14	3	2	M20000864		
							15	4	2	2201658		
							20	5	2	M20001081		
							22	5	2	M20001591		
							25	5	2	M20000693		
							30	6	2	M20001352		
			35	6	2		2402975					
			40	8	2		M20000832					
			45	8	2	2226556						
			50	8	2	M20000817						

*Other sizes and mesh types are available on request.

WIRE MESHES FOR MOBISCREEN MODELS									
Machine type	Model	Series range	Deck	Screen*					
				Average mesh size (mm)	Wire Ø (mm)	Screen section, large		Screen section, small	
						Quantity	Part No.	Quantity	Part No.
MS 15 Z-AD	K047	0001 - 9999	Upper deck	8	3	4	M10022614		
				10	3	4	M20001496		
				12	4	4	M20000872		
				13	4	4	M20000621		
				14	4	4	M20001027		
				15	4	4	M20001735		
				16	4	4	M20000833		
				18	4	4	M20001327		
				20	5	4	2234507		
				22	5	4	M20000690		
				25	5	4	M20000958		
				28	6	4	M20001629		
				30	8	4	2234516		
				32	7	4	M20001498		
				35	8	4	M20001727		
				40	8	4	M20000625		
				45	8	4	M20000642		
				50	10	4	M20000686		
			55	10	4	M20000627			
			60	10	4	M20001065			
			65	10	4	M20000688			
			70	10	4	M20001400			
			80	10	4	2218851			
			90	10	4	2202934			
			Lower deck	7	3	3	2212560		
				8	3.2	3	M10025548		
				9	3	3	2210653		
				10	3	3	M20001734		
				11	3	3	2228347		
				12	3	3	2197550		
				15	4	3	2198322		
				18	4	3	M20001499		
				20	5	3	M20001453		
				25	5	3	M20001563		
				28	6	3	2244893		
30	6	3		M20001564					
32	6	3		2231937					
35	8	3		M20001321					
40	8	3		M20001449					
50	10	3		M20001760					
55	10	3		M20001719					
60	10	3	2246161						
65	10	3	M20001720						
70	10	3	2292450						

*Other sizes and mesh types are available on request.

WIRE MESHES FOR MOBISCREEN MODELS

Machine type	Model	Series range	Deck	Screen*								
				Average mesh size (mm)	Wire Ø (mm)	Screen section, large		Screen section, small				
						Quantity	Part No.	Quantity	Part No.			
MS 952(i) EVO, MS 953(i) EVO	K085, K086, K105, K106	0001 - 9999	Upper / middle deck	7	3	5	2447170					
				8	3	5	2447171					
				10	4	5	2428276					
				11	4	5	2447085					
				12	4	5	2354096					
				15	5	5	2447094					
				16	5	5	2447110					
				18	5	5	2447118					
				20	5	5	2354095					
				22	6.3	5	2491562					
				25	6.3	5	2428275					
				28	6.3	5	2593549					
				30	8	5	2447130					
				32	8	5	2593554					
				35	8	5	2354093					
				38	8	5	2639254					
				40	8	5	2447134					
				45	8	5	2354091					
				50	8	5	2447141					
				55	10	5	2447143					
			60	10	5	2447147						
			65	10	5	2447148						
			70	10	5	2447150						
			75	10	5	2354086						
			90	12	5	2447153						
			100	12	5	2447154						
						Lower deck	7	3	3	2447173		
							8	3	3	2447186		
							9	3	3	2447190		
							10	4	3	2447196		
							11	4	3	2447202		
							12	4	3	2447208		
							15	5	3	2447216		
							20	5	3	2447222		
							25	6	3	2447229		
			30	8	3		2447231					
			35	8	3		2456089					
			38	8	3		2447233					
			40	8	3		2447234					
			45	8	3		2593570					
			50	10	3		2447236					

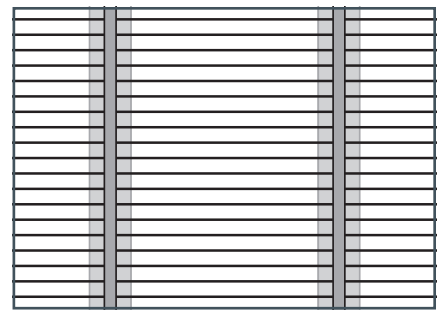
*Other sizes and mesh types are available on request.

WIRE MESHES FOR MOBISCREEN MODELS												
Machine type	Model	Series range	Deck	Screen*								
				Average mesh size (mm)	Wire Ø (mm)	Screen section, large		Screen section, small				
						Quantity	Part No.	Quantity	Part No.			
MS 19 Z, MS 19 D	K054, K055	0001 - 9999	Upper / middle deck	8	3	5	M10022614					
				10	3	5	M20001496					
				12	4	5	M20000872					
				13	4	5	M20000621					
				14	4	5	M20001027					
				15	4	5	M20001735					
				16	4	5	M20000833					
				18	4	5	M20001327					
				20	5	5	2234507					
				22	5	5	M20000690					
				25	5	5	M20000958					
				28	6	5	M20001629					
				30	8	5	2234516					
				32	7	5	M20001498					
				35	8	5	M20001727					
				40	8	5	M20000625					
				45	8	5	M20000642					
				50	10	5	M20000686					
			55	10	5	M20000627						
			60	10	5	M20001065						
			65	10	5	M20000688						
			70	10	5	M20001400						
			80	10	5	2218851						
			90	10	5	2202934						
						Lower deck	5	2	3	M20001308		
							8	3	3	M20000761		
							10	4	3	2234498		
							12	4	3	2234501		
							14	3	3	M20000864		
							15	4	3	2201658		
			20	5	3		M20001081					
			22	5	3		M20001591					
			25	5	3		M20000693					
			30	6	3		M20001352					
			35	6	3		2402975					
			40	8	3		M20000832					
			45	8	3	2226556						
			50	8	3	M20000817						
MS 21 Z-AD	K076	0001 - 9999	Upper deck	50	10	5	2298699					
				55	10	5	2298700					
				60	10	5	2298701					
				65	10	5	2298703					
				70	10	5	2298704					
				75	10	5	2298705					
				80	10	5	2298706					
				90	10	5	2298709					
				100	10	5	2298710					
			Lower deck	10	4	3	2298740					
				12	4	3	2298742					
				15	4	3	2298743					
				20	5	3	2298744					
				25	6	3	2298745					
				30	6	3	2298746					
				35	8	3	2298747					
				40	8	3	2298748					
				50	8	3	2298749					
	55	10	3	2693184								

*Other sizes and mesh types are available on request.

HARP SCREENS

G harp screen / piano wire
for MOBISCREEN models



HARP SCREENS (G HARP SCREEN / PIANO WIRE) FOR MOBISCREEN MODELS							
Machine type	Model	Lower deck screen*					
		Average mesh size (mm)	Wire Ø (mm)	Screen section, large		Screen section, small	
				Quantity	Part No.	Quantity	Part No.
MS 12 Z-AD	K067	2	0.7	1	2414054	1	2414096
		3	0.8	1	2414059	1	2414097
		4	1	1	2414060	1	2414098
		5	1	1	2414063	1	2414099
		6	1.2	1	2414066	1	2414100
		7	1.4	1	2414067	1	2414101
		8	1.5	1	2414092	1	2414102
		10	1.5	1	2414093	1	2414103
		12	1.8	1	2414095	1	2414104
MS 14 Z	K068	2	0.7	1	2414116		
		3	0.8	1	2414117		
		4	1	1	2414118		
		5	1	1	2414119		
		6	1.2	1	2414121		
		7	1.4	1	2414124		
		8	1.5	1	2414125		
		10	1.5	1	2414126		
		12	1.8	1	2414127		

*Other sizes and mesh types are available on request.

HARP SCREENS (G HARP SCREEN / PIANO WIRE) FOR MOBISCREEN MODELS							
Machine type	Model	Lower deck screen*					
		Average mesh size (mm)	Wire Ø (mm)	Screen section, large		Screen section, small	
				Quantity	Part No.	Quantity	Part No.
MS 13 Z-AD	K066	2	0.7	2	2414105		
		3	0.8	2	2414106		
		4	1	2	2414107		
		5	1	2	2414108		
		6	1.2	2	2414109		
		7	1.4	2	2414110		
		8	1.5	2	2414111		
		10	1.5	2	2414112		
		12	1.8	2	2414113		
MS 702(i) EVO, MS 703(i) EVO	K083, K084, K103, K104	2	1	1	2453837	1	2354104
		3	1	1	2453840	1	2447447
		4	1.2	1	2448606	1	2447459
		5	1.2	1	2453879	1	2354103
		6	1.6	1	2447936	1	2428273
		8	2	1	2551179	1	2551178

*Other sizes and mesh types are available on request.

HARP SCREENS (G HARP SCREEN / PIANO WIRE) FOR MOBISCREEN MODELS

Machine type	Model	Lower deck screen*					
		Average mesh size (mm)	Wire Ø (mm)	Screen section, large		Screen section, small	
				Quantity	Part No.	Quantity	Part No.
MS 16 Z, MS 16 D	K048, K049	2	0.7	2	2414148		
		3	0.8	2	2401395		
		4	1	2	2414149		
		5	1	2	2414150		
		6	1.2	2	M20000644		
		7	1.4	2	2414152		
		8	1.5	2	2414153		
		10	1.5	2	2414154		
		12	1.8	2	2414155		
MS 15 Z-AD	K047	2	0.7	3	2414132		
		3	0.8	3	2414134		
		4	1	3	2414135		
		5	1	3	2414136		
		6	1.2	3	2414138		
		7	1.4	3	2414141		
		8	1.5	3	2414142		
		10	1.5	3	2414143		
		12	1.8	3	2414145		

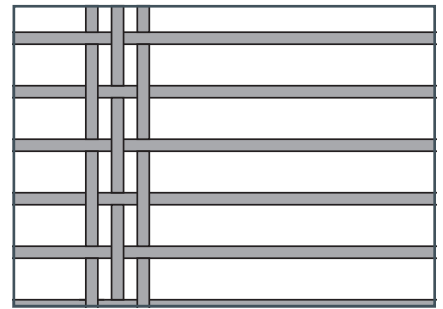
*Other sizes and mesh types are available on request.

HARP SCREENS (G HARP SCREEN / PIANO WIRE) FOR MOBISCREEN MODELS							
Machine type	Model	Lower deck screen*					
		Average mesh size (mm)	Wire Ø (mm)	Screen section, large		Screen section, small	
				Quantity	Part No.	Quantity	Part No.
MS 952(i) EVO, MS 953(i) EVO	K085, K086, K105, K106	2	1	3	2354104		
		3	1	3	2447447		
		4	1.2	3	2447459		
		5	1.2	3	2354103		
		6	1.6	3	2428273		
		8	2	3	2551178		
MS 19 Z, MS 19 D	K054, K055	2	0.7	3	2414148		
		3	0.8	3	2401395		
		4	1	3	2414149		
		5	1	3	2414150		
		6	1.2	3	M20000644		
		7	1.4	3	2414152		
		8	1.5	3	2414153		
		10	1.5	3	2414154		
		12	1.8	3	2414155		

*Other sizes and mesh types are available on request.

HARP SCREENS

W harp screen / long slot
for MOBISCREEN models



HARP SCREENS (W HARP SCREEN / LONG SLOT) FOR MOBISCREEN MODELS								
Machine type	Model	Series range	Lower deck screen*					
			Average mesh size (mm)	Wire Ø (mm)	Screen section, large		Screen section, small	
					Quantity	Part No.	Quantity	Part No.
MS 12 Z-AD	K067	0001 - 9999	8x100	3	1	2551120	1	2570587
			10x100	3	1	2355274	1	2355275
			10x150	2.5	1	2658789	1	2658792
			12x100	3	1	2564795	1	2564796
			12x150	3	1	2666314	1	2666315
			15x100	4	1	2306064	1	2306066
MS 13 Z-AD	K066	0001 - 9999	5x150	1.8	2	2373999		
			6x100	3	2	2248956		
			8x150	3	2	2264214		
			10x100	3	2	M20001456		
			10x150	2.5	2	2235533		
			12x100	3	2	M20001572		
			12x150	3	2	2375349		
			20x100	5	2	M20001774		

*Other sizes and mesh types are available on request.

HARP SCREENS (W HARP SCREEN / LONG SLOT) FOR MOBISCREEN MODELS								
Machine type	Model	Series range	Lower deck screen*					
			Average mesh size (mm)	Wire Ø (mm)	Screen section, large		Screen section, small	
					Quantity	Part No.	Quantity	Part No.
MS 702(i) EVO, MS 703(i) EVO	K083, K084, K103, K104	0001 - 9999	6x150	2	1	2679965	1	2679963
			8x150	3	1	2679966	1	2679964
			10x150	3	1	2673669	1	2673601
MS 16 Z, MS 16 D	K048, K049	0001 - 9999	4x100	2	2	2580873		
			5x150	2	2	2269616		
			6x150	2	2	2308222		
			7x100	2	2	2331280		
			8x150	3	2	M20001072		
			10x100	3	2	M20001779		
			14x100	3	2	2374863		
			15x150	3	2	2454473		
MS 15 Z-AD	K047	0001 - 9999	6x150	2	3	2591014		
			8x100	2.5	3	2457138		
			8x150	3	3	2683195		
			10x100	4	3	2601139		
			12x100	3	3	M20001674		
			15x100	4	3	2205115		
			16x100	4	3	2573132		

*Other sizes and mesh types are available on request.

HARP SCREENS (W HARP SCREEN / LONG SLOT) FOR MOBISCREEN MODELS								
Machine type	Model	Series range	Lower deck screen*					
			Average mesh size (mm)	Wire Ø (mm)	Screen section, large		Screen section, small	
					Quantity	Part No.	Quantity	Part No.
MS 952(i) EVO, MS 953(i) EVO	K085, K086, K105, K106	0001 - 9999	6x150	2	3	2679963		
			8x150	3	3	2679964		
			10x150	2.5	3	2673601		
MS 19 Z, MS 19 D	K055, K054	0001 - 9999	4x100	2	3	2580873		
			5x150	2	3	2269616		
			6x150	2	3	2308222		
			7x100	2	3	2331280		
			8x150	3	3	M20001072		
			10x100	3	3	M20001779		
			14x100	3	3	2374863		
15x150	3	3	2454473					

*Other sizes and mesh types are available on request.

THIS MUST BE TAKEN INTO ACCOUNT WHEN SCREENING FINE MATERIAL:

- > The cloth mesh size should not be too fine, as fine material may cake and the surface may clog.
- > The finer the wire thickness, the fewer encrustations arise and at a higher throughput. The screen is then more robust.
- > With their strong vibration, plastic screens are suitable for fine and moist material. This way encrustations can be avoided. A coarse mesh upper deck is ideal for removing coarse material from the lower deck.



All details, illustrations and texts are non-binding and may include optional additional fittings. Subject to technical modifications. Performance data dependant upon operational conditions.

© WIRTGEN GROUP Branch of John Deere GmbH & Co. KG 2019. Printed in Germany. No. 2749927 EN-12/19 - V1